

20
24

PREMIUM QUALITY

MADE IN ITALY

50 1973 - 2024
years
of experience
and passion

 **DELFO**[®]
WELDING TECHNOLOGIES

TORCHES & WELDING ACCESSORIES
MIG / MAG - TIG

GENERAL CATALOGUE

www.delfoweld.com



QUALITY & DESIGN

ALWAYS OUR

HISTORY

PREMIUM QUALITY
MADE IN ITALY



ABOUT US

"DELFO S.r.l." it's a new name proposed by a board that started operating in this sector in 1973 founding OCIM S.r.l. (first Italian manufacturer of Mig-Tig torches)

The aim of the new company will be the development of new products in order to maintain and further overcome the quality standard that has always distinguished us.

PRODUCTION

Thanks to the passion and experience gained over 50 years in welding market, we can define Delfo as a leader in the design and construction of special torches, both Air and Water cooled, with unique characteristics that meet the welder's needs.

DISTRIBUTION

Delfo's products are distributed through a dense network of specialized welding dealers.

INNOVATION

Innovation and quality are the foundations on which the company is focused, to achieve these objectives Delfo S.r.l. invests significant human and financial resources in the development of new products in order to offer advanced technical solutions.



TABLE OF CONTENTS

DELFO MIG

AIR - LIQUID COOLED TORCHES

DM. 2	6
DM. 3	8
DM. 4	10
TW. 1	12
TW. 2	14
TW. 4	16
DM. 27	20
DM. 30	22
DM. 50	24
DM. 55	28
DM. 65	30

DELFO AUTOMIG

AIR - LIQUID COOLED TORCHES

AM.3	34
AM.30	36
AM.50	38
AM.55	40
REPLACEMENT & ACCESSORIES MIG	from pag. 42 to pag. 45

DELFO TIG

AIR - LIQUID COOLED TORCHES

DT. 9 / 9V	48
DT. 17 / 17V	50
DT. 26 / 26V	52
DT. 18	54
DT. 20	56
DT. 24 W	58
REPLACEMENT & ACCESSORIES TIG	from pag. 60 to pag. 65

FOLLOW US ON



DELFO MIG - AIR

AIR COOLED TORCHES

BEING DIFFERENT

PREMIUM QUALITY

MADE IN ITALY

- » Ergonomic handle with "Grip" insert for best accessibility - optimum balance.
- » Gas diffusers with metallic protection, for greater durability and heat resistance.
- » Ball joint with optimum movement radius.



DM.2 - DELFOMIG - AIR

AIR COOLED TORCHES

TECHNICAL DATA

Technical data: (EN60974-7)
Rating CO₂: 260A.
Rating mixed Gas (M21): 200 A.
Duty Cycle: 60%
Wire Size: Ø 0,8-1,2 mm

SET 1 - TIP M8X30

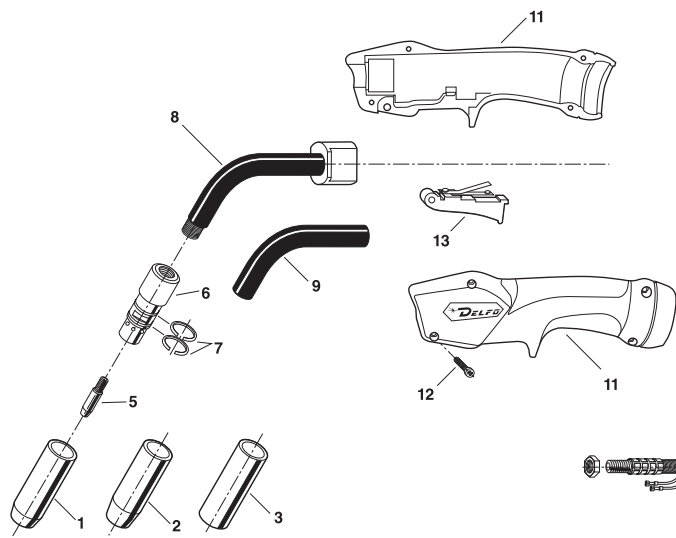
COMPLETE TORCH P/N		
MOD	P/N	LENGTH
DM2.3	500.050.307	3 m.
DM2.4	500.050.407	4 m.

SET 2 - TIP M6X30

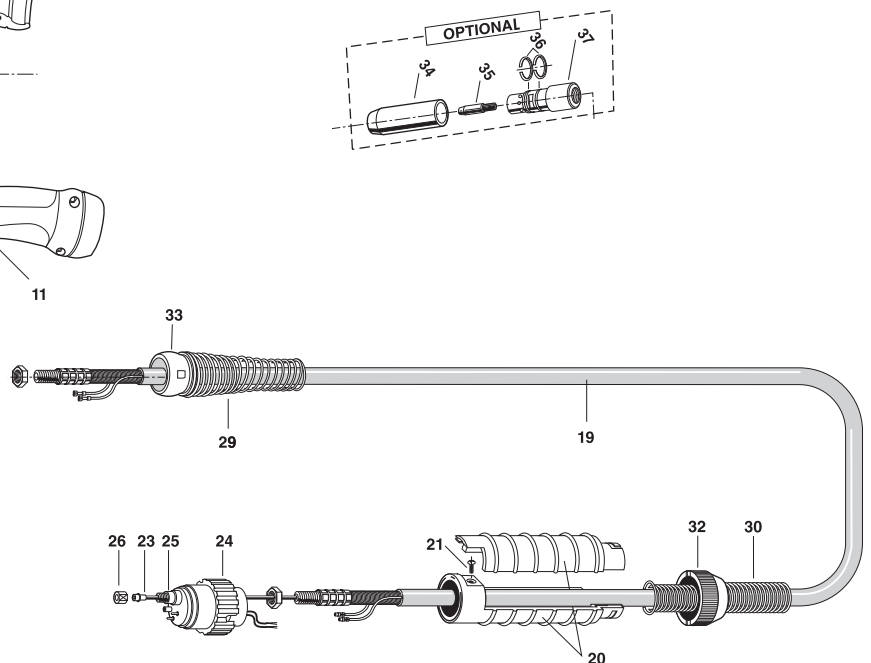
COMPLETE TORCH P/N		
MOD	P/N	LENGTH
DM2.3	500.040.307	3 m.
DM2.4	500.040.407	4 m.



SET 1 - TIP M8X30



SET 2 - TIP M6X30



REPLACEMENT PARTS

POS.	DESCRIPTION	P/N	BAG
1*	Nozzle Stnd. Øi. 15	179.105.110	5
2	Tapered Nozzle Øi. 12	179.109.107	5
3	Cylindric Nozzle Øi. 18	179.104.105	5
5	Contact Tip M8x30 CU ø 0,8	147.010.308	25
5*	Contact Tip M8x30 CU ø 1,0	147.010.310	25
5	Contact Tip M8x30 CU ø 1,2	147.010.312	25
5	Contact Tip M8x30 CU-CR-ZR ø 0,8	147.020.308	25
5	Contact Tip M8x30 CU-CR-ZR ø 1,0	147.020.310	25
5	Contact Tip M8x30 CU-CR-ZR ø 1,2	147.020.312	25
6	Gas Diffuser	118.102.111	5
7	Elastic Ring	101.101.104	20
8	Torch body with insulator	516.103.005	1
9	Wukon insulating tube	140.104.130	1
11	Handle "DM" series	537.100.111	1
12	Handle case screw	181.103.108	20
13	Complete bladeswitch	146.101.112	5
19	Complete coaxial cable 3m.	508.250.302	1
19	Complete coaxial cable 4m.	508.250.402	1
20	Back cable support	156.101.103	1
21	Back cable support screw	181.106.101	20
23	3,0 m. Liner for wires Ø 0,6 / 1,0	130.020.302	1
23	4,0 m. Liner for wires Ø 0,6 / 1,0	130.020.402	1
23*	3,0 m. Liner for wires Ø 1,0 / 1,2	130.050.302	1
23*	4,0 m. Liner for wires Ø 1,0 / 1,2	130.050.402	1
23	3,0 m. Liner for Al. wires Ø 0,8 / 1,0 Teflon	134.110.302	1
23	4,0 m. Liner for Al. wires Ø 0,8 / 1,0 Teflon	134.110.402	1
23	3,0 m. Liner for Al. wires Ø 1,0 / 1,2 Teflon	134.060.302	1
23	4,0 m. Liner for Al. wires Ø 1,0 / 1,2 Teflon	134.060.402	1
23	3,0 m. Liner for Al. wires Ø 0,8 / 1,0 Carbo	134.030.402	1
23	4,0 m. Liner for Al. wires Ø 1,2 / 1,6 Carbo	134.090.402	1
24	Locking ring	127.102.102	5
25	Euro Connector	142.105.107	1
26	Liner Nut	117.101.101	10
29	Spring (handle side)	141.106.116	1
30	Spring (connector side)	141.106.107	1
32	Connector locking ring	127.105.101	1
33	Knuckle joint	156.102.109	1
34A	Nozzle Stnd. Øi. 14	179.105.103	5
34B	Tapered Nozzle Øi. 12,5	179.109.102	5
34C	Cylindric Nozzle Øi. 16	179.104.102	5
35	Contact Tip M6x30 CU ø 0,8	147.010.208	25
35	Contact Tip M6x30 CU ø 1,0	147.010.210	25
35	Contact Tip M6x30 CU-CR-ZR ø 0,8	147.020.208	25
35	Contact Tip M6x30 CU-CR-ZR ø 1,0	147.020.210	25
36	Elastic Ring	101.101.102	20
37	Gas Diffuser	118.102.117	5

(*) Standard

DM.3 - DELFOMIG - AIR

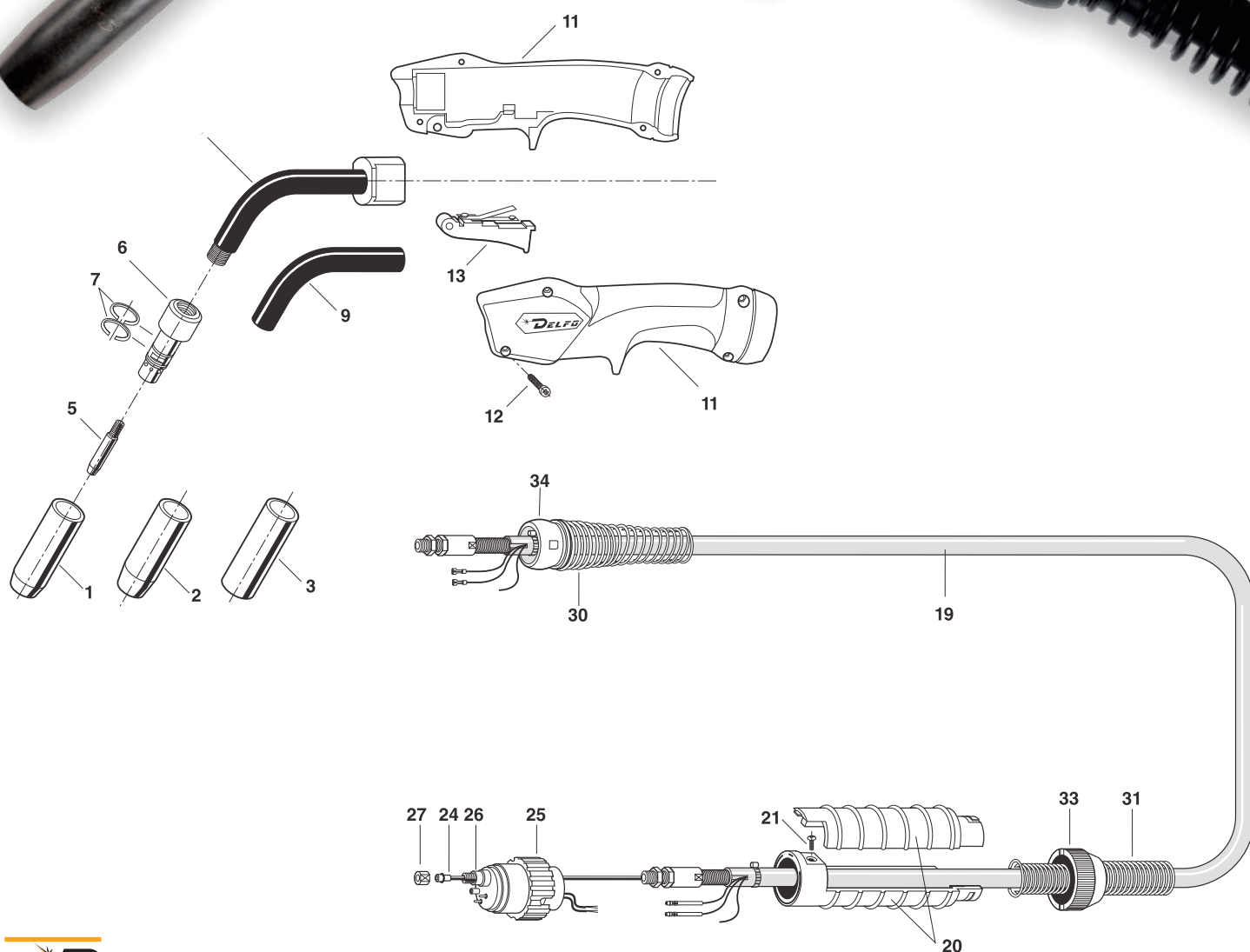
AIR COOLED TORCHES

TECHNICAL DATA

Technical data:	(EN60974-7)
Rating CO₂:	340A.
Rating mixed Gas (M21):	290 A.
Duty Cycle:	60%
Wire Size:	Ø 0,8-1,2 mm

COMPLETE TORCH P/N

MOD	P/N	LENGTH
DM3.3	500.080.307	3 m.
DM3.4	500.080.407	4 m.



REPLACEMENT PARTS

POS.	DESCRIPTION	P/N	BAG
1*	Nozzle Stnd. Øi. 16	179.105.115	5
2	Tapered Nozzle Øi. 13	179.109.124	5
3	Cylindric Nozzle Øi. 20	179.104.112	5
5	Contact Tip M8x40 CU ø 0,8	147.010.108	25
5*	Contact Tip M8x40 CU ø 1,0	147.010.110	25
5	Contact Tip M8x40 CU ø 1,2	147.010.112	25
5	Contact Tip M8x40 CU-CR-ZR ø 0,8	147.020.108	25
5	Contact Tip M8x40 CU-CR-ZR ø 1,0	147.020.110	25
5	Contact Tip M8x40 CU-CR-ZR ø 1,2	147.020.112	25
6	Gas Diffuser	118.102.119	5
7	Elastic Ring	101.101.105	20
8	Torch body with insulator	516.103.006	1
9	Wukon insulating tube	140.104.204	1
11	Handle "DM" series	537.100.111	1
12	Handle case screw	181.103.108	20
13	Complete bladeswitch	146.101.112	5
19	Complete coaxial cable 3m.	508.350.302	1
19	Complete coaxial cable 4m.	508.350.402	1
20	Back cable support	156.101.103	1
21	Back cable support screw	181.106.101	20
24	3,0 m. Liner for wires Ø 0,6 / 1,0	130.020.302	1
24	4,0 m. Liner for wires Ø 0,6 / 1,0	130.020.402	1
24*	3,0 m. Liner for wires Ø 1,0 / 1,2	130.050.302	1
24*	4,0 m. Liner for wires Ø 1,0 / 1,2	130.050.402	1
24	3,0 m. Liner for Al. wires Ø 1,0 / 1,2 Teflon	134.060.302	1
24	4,0 m. Liner for Al. wires Ø 1,0 / 1,2 Teflon	134.060.402	1
24	3,0 m. Liner for Al. wires Ø 0,8 / 1,0 Carbo	134.030.402	1
24	4,0 m. Liner for Al. wires Ø 1,2 / 1,6 Carbo	134.090.402	1
25	Locking ring	127.102.102	5
26	Euro Connector	142.105.113	1
27	Liner Nut	117.101.101	10
30	Spring (handle side)	141.106.116	1
31	Spring (connector side)	141.106.107	1
33	Connector locking ring	127.105.101	1
34	Knuckle joint	156.102.109	1

(*) Standard

DM.4 - DELFOMIG - AIR

AIR COOLED TORCHES

TECHNICAL DATA

Technical data:	(EN60974-7)
Rating CO₂:	400A.
Rating mixed Gas (M21):	350 A.
Duty Cycle:	60%
Wire Size:	Ø 0,8-1,6 mm

COMPLETE TORCH P/N

MOD	P/N	LENGTH
DM4.3	500.100.307	3 m.
DM4.4	500.100.407	4 m.



REPLACEMENT PARTS

POS.	DESCRIPTION	P/N	BAG
1*	Nozzle Stnd. Øi. 17	179.105.113	5
2	Tapered Nozzle Øi. 16	179.109.112	5
3	Cylindric Nozzle Øi. 21	179.104.108	5
5	Contact Tip M8x40 CU ø 0,8	147.010.108	25
5	Contact Tip M8x40 CU ø 1,0	147.010.110	25
5*	Contact Tip M8x40 CU ø 1,2	147.010.112	25
5	Contact Tip M8x40 CU ø 1,4	147.010.114	25
5	Contact Tip M8x40 CU ø 1,6	147.010.116	25
5	Contact Tip M8x40 CU-CR-ZR ø 0,8	147.020.108	25
5	Contact Tip M8x40 CU-CR-ZR ø 1,0	147.020.110	25
5	Contact Tip M8x40 CU-CR-ZR ø 1,2	147.020.112	25
5	Contact Tip M8x40 CU-CR-ZR ø 1,4	147.020.114	25
5	Contact Tip M8x40 CU-CR-ZR ø 1,6	147.020.116	25
6	Gas Diffuser	118.102.122	5
7	Elastic Ring	101.101.103	20
8	Torch body with insulator	516.103.007	1
9	Wukon insulating tube	140.104.205	1
11	Handle "DM" series	537.100.111	1
12	Handle case screw	181.103.108	20
13	Complete bladeswitch	146.101.112	5
19	Complete coaxial cable 3m.	508.500.302	1
19	Complete coaxial cable 4m.	508.500.402	1
20	Back cable support	156.101.103	1
21	Back cable support screw	181.106.101	20
24	3,0 m. Liner for wires Ø 1,0 / 1,2	130.030.302	1
24	4,0 m. Liner for wires Ø 1,0 / 1,2	130.030.402	1
24*	3,0 m. Liner for wires Ø 1,2 / 1,6	130.040.302	1
24*	4,0 m. Liner for wires Ø 1,2 / 1,6	130.040.402	1
24	3,0 m. Liner for Al. wires Ø 1,0 / 1,2 Teflon	134.060.302	1
24	4,0 m. Liner for Al. wires Ø 1,0 / 1,2 Teflon	134.060.402	1
24	3,0 m. Liner for Al. wires Ø 1,2 / 1,6 Teflon	134.070.302	1
24	4,0 m. Liner for Al. wires Ø 1,2 / 1,6 Teflon	130.070.402	1
24	3,0 m. Liner for Al. wires Ø 0,8 / 1,0 Carbo	134.030.402	1
24	4,0 m. Liner for Al. wires Ø 1,2 / 1,6 Carbo	134.090.402	1
25	Locking ring	127.102.102	5
26	Euro Connector	142.105.113	1
27	Liner Nut	117.101.101	10
30	Spring (handle side)	141.106.116	1
31	Spring (connector side)	141.106.107	1
32	Knuckle joint	156.102.109	1
33	Connector locking ring	127.105.101	1

(*) Standard

TW.1 - DELFOMIG - AIR

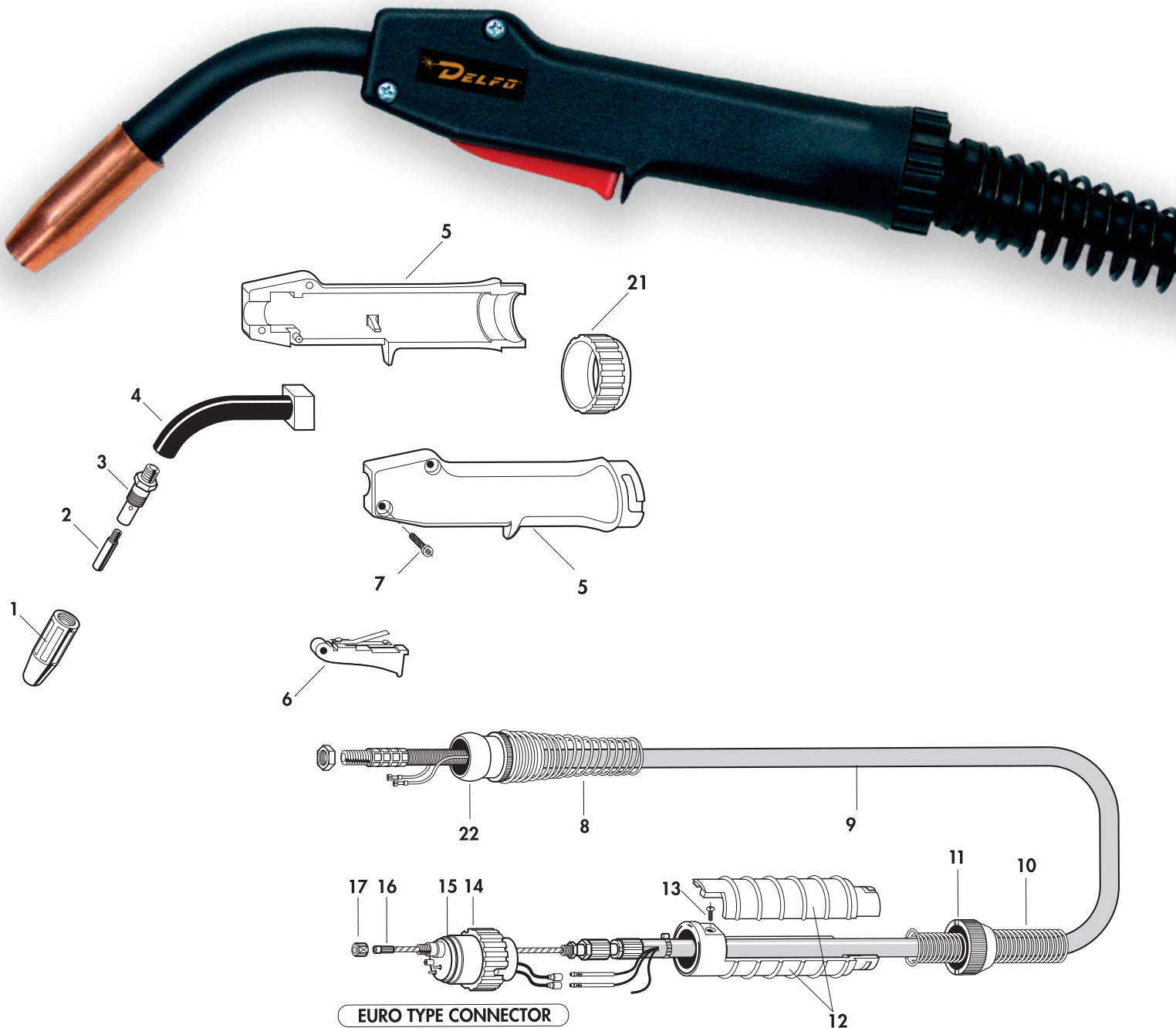
AIR COOLED TORCHES
WITH TWECO® COMPATIBLE CONSUMABLES

TECHNICAL DATA

Technical data: (EN60974-7)
Rating CO₂: 220A.
Rating mixed Gas (M21): 160 A.
Duty Cycle: 60%
Wire Size: Ø 0,8-1,0 mm

COMPLETE TORCH P/N

MOD	P/N	LENGTH
TW 1.3	500.540.307	3 m.
TW 1.4	500.540.407	4 m.
TW 1.5	500.540.507	5 m.



REPLACEMENT PARTS

POS.	DESCRIPTION	P/N	BAG
1*	Nozzle TW1 Øi.12,7	21-50	10
2	Contact Tip CU ø 0,8	11-30	20
2	Contact Tip CU ø 0,9	11-35	20
2*	Contact Tip CU ø 1,0	11-40	20
3	Gas Diffuser	51	10
4	Torch body with insulator	116.103.505	1
5	Handle	137.100.110	1
6	Complete bladeswitch	146.101.112	5
7	Handle case screw	181.103.105	20
8	Spring (handle side)	141.106.110	1
9	Complete coaxial cable 3m.	108.250.302	1
9	Complete coaxial cable 4m.	108.250.402	1
9	Complete coaxial cable 5m.	108.250.502	1
10	Spring (connector side)	141.106.107	1
11	Connector locking ring	127.105.101	1
12	Back cable support	156.101.103	1
13	Back cable support screw	181.106.101	20
14	Locking ring	127.102.102	5
15	Euro Connector	142.105.501	1
16*	4,5 m. Liner for wires Ø 0,8 / 1,2	42-4045-15	1
17	Liner Nut	117.101.501	10
21	Handle locking ring	127.108.101	1
22	Knuckle joint	156.102.106	1

(*) Standard

TW.2 - DELFOMIG - AIR

AIR COOLED TORCHES

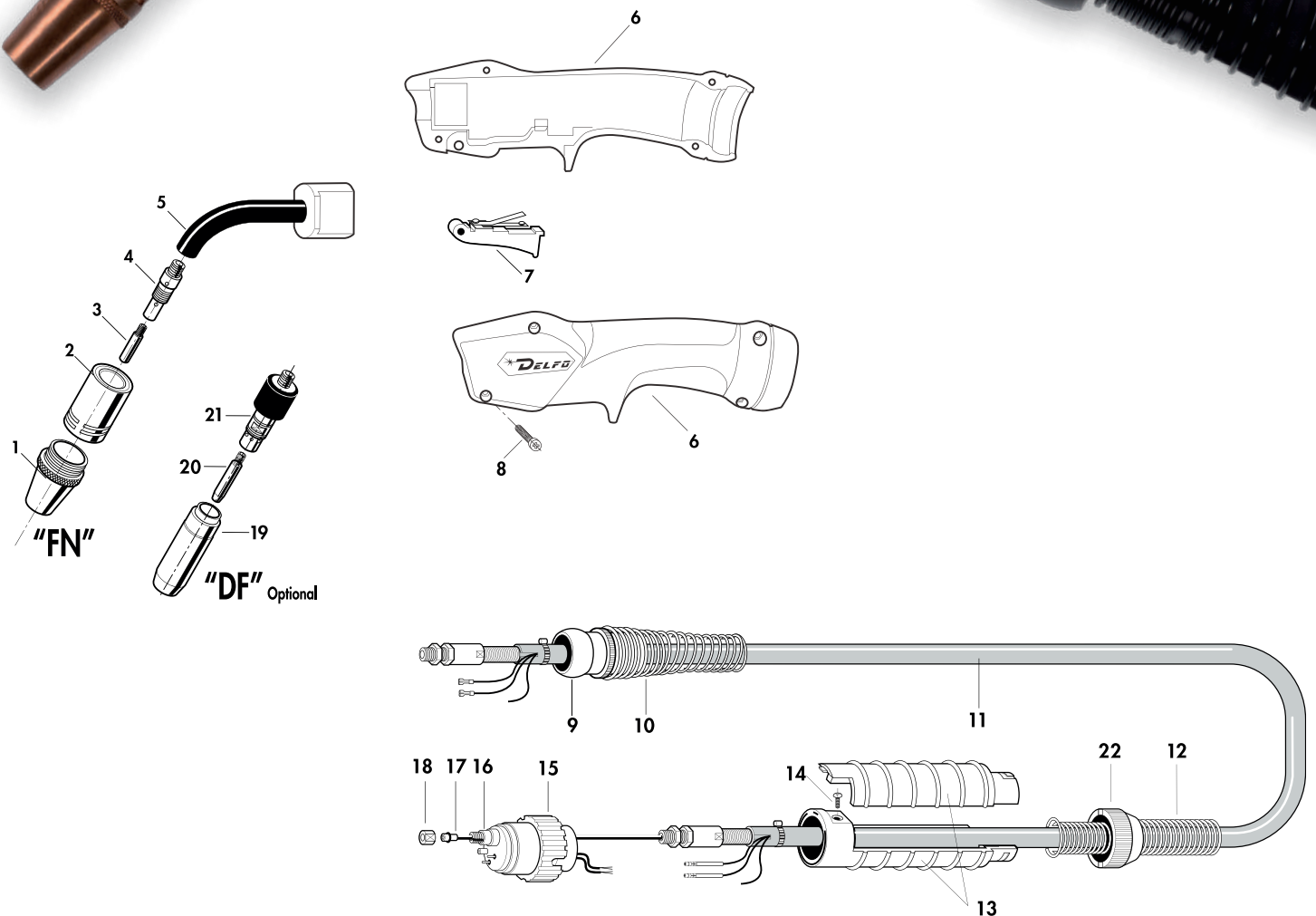
WITH TWECO® COMPATIBLE CONSUMABLES

TECHNICAL DATA

Technical data:	(EN60974-7)
Rating CO₂:	340A.
Rating mixed Gas (M21):	290 A.
Duty Cycle:	60%
Wire Size:	Ø 0,8-1,2 mm

COMPLETE TORCH P/N

MOD	P/N	LENGTH
TW2.3-FN	500.551.307	3 m.
TW2.4-FN	500.551.407	4 m.
TW2.3-DF	500.552.307	3 m.
TW2.4-DF	500.552.407	4 m.



REPLACEMENT PARTS

POS.	DESCRIPTION	P/N	BAG
1*	Conic nozzle Øi. 16	24CT-62-S	2
2	Nozzle insulator	34CT	2
3	Contact Tip CU ø 0,8	14H-35	25
3	Contact Tip CU ø 1,0	14H-40	25
3*	Contact Tip CU ø 1,2	14H-45	25
4	Gas Diffuser	52FN	5
5	Torch body with insulator	516.103.506	1
6	Handle "DM" series	537.100.111	1
7	Complete bladeswitch	146.101.112	5
8	Handle case screw	181.103.108	20
9	Knuckle joint	156.102.109	1
10	Spring (handle side)	141.106.116	1
11	Complete coaxial cable 3m.	508.350.302	1
11	Complete coaxial cable 4m.	508.350.402	1
12	Spring (connector side)	141.106.107	1
13	Back cable support	156.101.103	1
14	Back cable support screw	181.106.101	20
15	Locking ring	127.102.102	5
16	Euro Connector	142.105.502	1
17	4,5 m. Liner for wires Ø 0,8 / 1,2	42-4045-15	1
18	Liner Nut	117.101.501	10
19	Nozzle Stnd. Øi. 15	179.105.114	5
19	Tapered Nozzle Øi. 12	179.109.118	5
20	Contact Tip M8x40 CU ø 0,8	147.010.108	25
20	Contact Tip M8x40 CU ø 1,0	147.010.110	25
20	Contact Tip M8x40 CU ø 1,2	147.010.112	25
20	Contact Tip M8x40 CU-CR-ZR ø 0,8	147.020.108	25
20	Contact Tip M8x40 CU-CR-ZR ø 1,0	147.020.110	25
20	Contact Tip M8x40 CU-CR-ZR ø 1,2	147.020.112	25
21	Gas Diffuser	118.102.510	5
22	Connector locking ring	127.105.101	1

(*) Standard

TW.4 - DELFOMIG - AIR

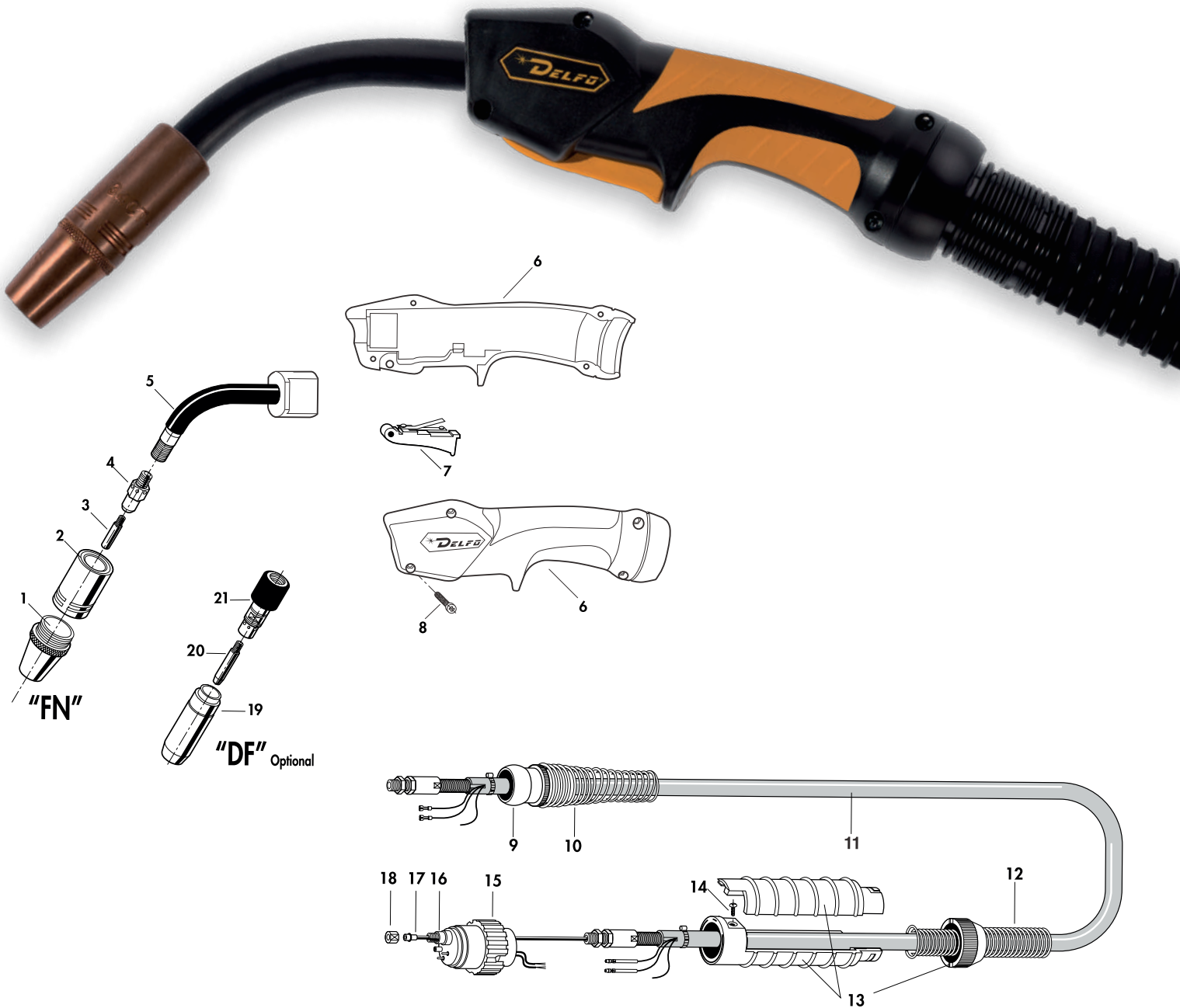
AIR COOLED TORCHES
WITH TWECO® COMPATIBLE CONSUMABLES

TECHNICAL DATA

Technical data: (EN60974-7)
Rating CO₂: 400A.
Rating mixed Gas (M21): 350 A.
Duty Cycle: 60%
Wire Size: Ø 1,0-1,6 mm

COMPLETE TORCH P/N

MOD	P/N	LENGTH
TW4.3-FN	500.561.307	3 m.
TW4.4-FN	500.561.407	4 m.
TW4.3-DF	500.562.307	3 m.
TW4.4-DF	500.562.407	4 m.



REPLACEMENT PARTS

POS.	DESCRIPTION	P/N	BAG
1*	Conic nozzle Øi. 16	24CT-62-S	2
2	Nozzle insulator	34CT	2
3	Contact Tip CU ø 0,8	14H-35	25
3	Contact Tip CU ø 1,0	14H-40	25
3*	Contact Tip CU ø 1,2	14H-45	25
3	Contact Tip CU ø 1,3	14H-52	25
3	Contact Tip CU ø 1,6	14H-116	25
4	Gas Diffuser	54A	5
5	Torch body with insulator	516.103.507	1
6	Handle "DM" series	537.100.111	1
7	Complete bladeswitch	146.101.112	5
8	Handle case screw	181.103.108	20
9	Knuckle joint	156.102.109	1
10	Spring (handle side)	141.106.116	1
11	Complete coaxial cable 3m.	508.500.302	1
11	Complete coaxial cable 4m.	508.500.402	1
12	Spring (connector side)	141.106.107	1
13	Back cable support	156.101.103	1
14	Back cable support screw	181.106.101	20
15	Locking ring	127.102.102	5
16	Euro Connector	142.105.502	1
17	4,5 m. Liner for wires Ø 0,8 / 1,2	44-3545-15	1
17	4,5 m. Liner for wires Ø 1,2 / 1,6	44-116-15	1
18	Liner Nut	117.101.501	10
19	Nozzle Stnd. Øi. 17	179.105.121	5
19	Tapered Nozzle Øi. 16	179.109.110	5
20	Contact Tip M8x40 CU ø 0,8	147.010.108	25
20	Contact Tip M8x40 CU ø 1,0	147.010.110	25
20	Contact Tip M8x40 CU ø 1,2	147.010.112	25
20	Contact Tip M8x40 CU ø 1,6	147.010.116	25
20	Contact Tip M8x40 CU-CR-ZR ø 0,8	147.020.108	25
20	Contact Tip M8x40 CU-CR-ZR ø 1,0	147.020.110	25
20	Contact Tip M8x40 CU-CR-ZR ø 1,2	147.020.112	25
20	Contact Tip M8x40 CU-CR-ZR ø 1,6	147.020.116	25
21	Gas Diffuser	118.102.511	5
22	Connector locking ring	127.105.101	1

(*) Standard



50

1973 – 2024

years

of **experience**
and **passion**

DELFO MIG - LIQUID

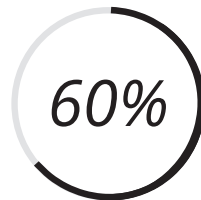
LIQUID COOLED TORCHES



BEING DIFFERENT

PREMIUM QUALITY

MADE IN ITALY



New liquid cooling system
increased by 60%

- » Ergonomic handle with "Grip" insert for best accessibility - optimum balance.
- » Nozzle-holder with mettalic protection, for greater durability and heat resistance.
- » Ball joint with optimum movement radius.

DM.27 - DELFOMIG - LIQUID

LIQUID COOLED TORCHES

TECHNICAL DATA

Technical data:	(EN60974-7)
Rating CO₂:	300 A.
Rating mixed Gas (M21):	270 A.
Duty Cycle:	100%
Wire Size:	Ø 0,8 -1,2 mm
Torch input pressure:	Min. 2,5 bar (Max. 3,5 bar)
Min. flow rate:	1,3 l/min.

COMPLETE TORCH P/N

MOD	P/N	LENGTH
DM27.3	501.070.307	3 m.
DM27.4	501.070.407	4 m.



REPLACEMENT PARTS

POS.	DESCRIPTION	P/N	BAG
1*	Nozzle Stnd. Øi. 15	179.105.110	5
2	Tapered Nozzle Øi. 12	179.109.107	5
3	Cylindric Nozzle Øi. 18	179.104.105	5
4	Contact Tip M8x30 CU ø 0,8	147.010.308	25
4	Contact Tip M8x30 CU ø 1,0	147.010.310	25
4	Contact Tip M8x30 CU ø 1,2	147.010.312	25
4	Contact Tip M8x30 CU-CR-ZR ø 0,8	147.020.308	25
4	Contact Tip M8x30 CU-CR-ZR ø 1,0	147.020.310	25
4*	Contact Tip M8x30 CU-CR-ZR ø 1,2	147.020.312	25
5	Elastic ring	101.101.104	20
8	Handle "DM" series	537.100.111	1
9	Handle case screw	181.103.108	20
10	Wukon insulating tube	140.104.112	1
11	Complete bladeswitch	146.101.112	5
13	Liner Carrier 3m.	145.050.301	1
13	Liner Carrier 4m.	145.050.401	1
16	Power Cable 3m.	512.100.301	1
16	Power Cable 4m.	512.100.401	1
17	Water in hose "black"	202.090.050	-
18	Control cable	143.101.102	-
20	Protective cover	175.300.280	-
21	Cable assembly 3m.	523.002.302	1
21	Cable assembly 4m.	523.002.402	1
22	Back cable support	156.101.106	1
23	Back cable support screw	181.103.103	20
24	Water out hose "black"	202.090.050	-
26	Euro Connector	142.105.121	1
28	Locking ring	127.102.102	5
29	Liner Nut	117.101.101	10
30*	3,0 m. Liner for wires Ø 1,0 / 1,2	130.050.302	1
30*	4,0 m. Liner for wires Ø 1,0 / 1,2	130.050.402	1
30	3,0 m. Liner for Al. wires Ø 1,0 / 1,2 Teflon	134.060.302	1
30	4,0 m. Liner for Al. wires Ø 1,0 / 1,2 Teflon	134.060.402	1
30	3,0 m. Liner for Al. wires Ø 0,8 / 1,0 Carbo	134.030.402	1
30	4,0 m. Liner for Al. wires Ø 1,2 / 1,6 Carbo	134.090.402	1
31	Quick Connector	150.108.115	10
32	Gas Diffuser	118.103.105	5
33	Insulating ring	151.105.107	10
34	Nozzle holder	150.112.103	1
35	Hose clamp Ø 10,5	101.106.205	10
36	Torch body with nozzle holder	516.116.105	1
37	Spring (connector side)	141.106.109	1
39	Spring (handle side)	141.106.115	1
40	Knuckle joint	156.102.109	1

(*) Standard

DM.30 - DELFOMIG - LIQUID

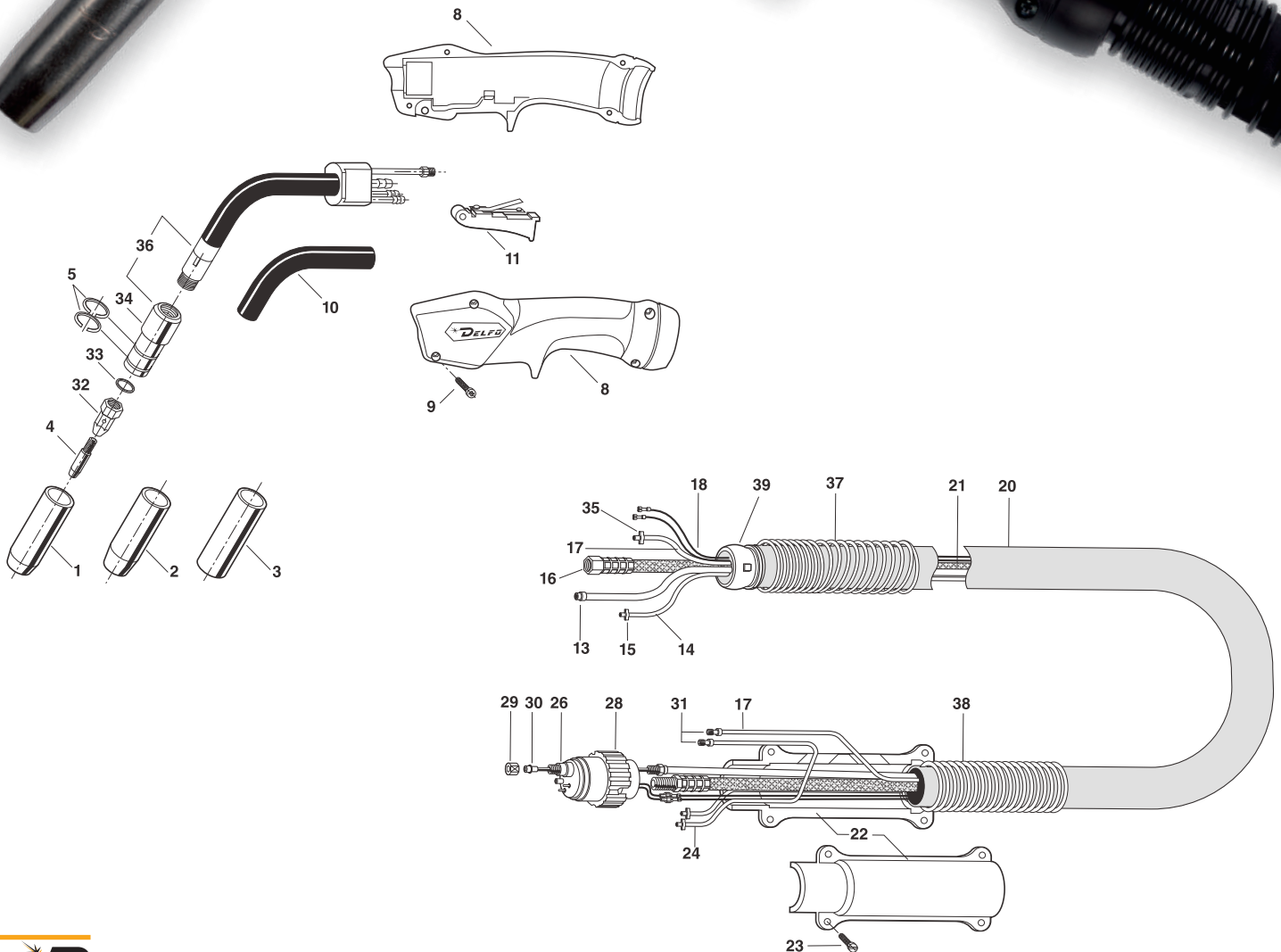
LIQUID COOLED TORCHES

TECHNICAL DATA

Technical data:	(EN60974-7)
Rating CO₂:	330 A.
Rating mixed Gas (M21):	300 A.
Duty Cycle:	100%
Wire Size:	Ø 0,8 -1,2 mm
Torch input pressure:	Min. 2,5 bar (Max. 3,5 bar)
Min. flow rate:	1,3 l/min.

COMPLETE TORCH P/N

MOD	P/N	LENGTH
DM30.3	501.080.307	3 m.
DM30.4	501.080.407	4 m.



REPLACEMENT PARTS

POS.	DESCRIPTION	P/N	BAG
1*	Nozzle Stnd. Øi. 15	179.105.114	5
2	Tapered Nozzle Øi. 12	179.109.118	5
3	Cylindric Nozzle Øi. 18	179.104.109	5
4	Contact Tip M8x40 CU ø 0,8	147.010.108	25
4	Contact Tip M8x40 CU ø 1,0	147.010.110	25
4	Contact Tip M8x40 CU ø 1,2	147.010.112	25
4	Contact Tip M8x40 CU-CR-ZR ø 0,8	147.020.108	25
4	Contact Tip M8x40 CU-CR-ZR ø 1,0	147.020.110	25
4*	Contact Tip M8x40 CU-CR-ZR ø 1,2	147.020.112	25
5	Elastic ring	101.101.104	20
8	Handle "DM" series	537.100.111	1
9	Handle case screw	181.103.108	20
10	Wukon insulating tube	140.104.112	1
11	Complete bladeswitch	146.101.112	5
13	Liner Carrier 3m.	145.050.301	1
13	Liner Carrier 4m.	145.050.401	1
14	Gas hose "black"	166.081.051	-
15	Hose clamp Ø 9,5	101.106.202	10
16	Power Cable 3m.	512.100.301	1
16	Power Cable 4m.	512.100.401	1
17	Water in hose "black"	202.090.050	-
18	Control cable	143.101.102	-
20	Protective cover	175.300.280	-
21	Cable assembly 3m.	523.001.302	1
21	Cable assembly 4m.	523.001.402	1
22	Back cable support	156.101.106	1
23	Back cable support screw	181.103.103	20
24	Water out hose "black"	202.090.050	-
26	Euro Connector	142.105.123	1
28	Locking ring	127.102.102	5
29	Liner Nut	117.101.101	10
30*	3,0 m. Liner for wires Ø 1,0 / 1,2	130.050.302	1
30*	4,0 m. Liner for wires Ø 1,0 / 1,2	130.050.402	1
30	3,0 m. Liner for Al. wires Ø 1,0 / 1,2 Teflon	134.060.302	1
30	4,0 m. Liner for Al. wires Ø 1,0 / 1,2 Teflon	134.060.402	1
30	3,0 m. Liner for Al. wires Ø 0,8 / 1,0 Carbo	134.030.402	1
30	4,0 m. Liner for Al. wires Ø 1,2 / 1,6 Carbo	134.090.402	1
31	Quick Connector	150.108.115	10
32	Gas Diffuser	118.103.105	5
33	Insulating ring	151.105.107	10
34	Nozzle holder	150.112.103	1
35	Hose clamp Ø 10,5	101.106.205	10
36	Torch body with nozzle holder	516.116.104	1
37	Spring (handle side)	141.106.115	1
38	Spring (connector side)	141.106.109	1
39	Knuckle joint	156.102.109	1

(*) Standard

DM.50 - DELFOMIG - LIQUID

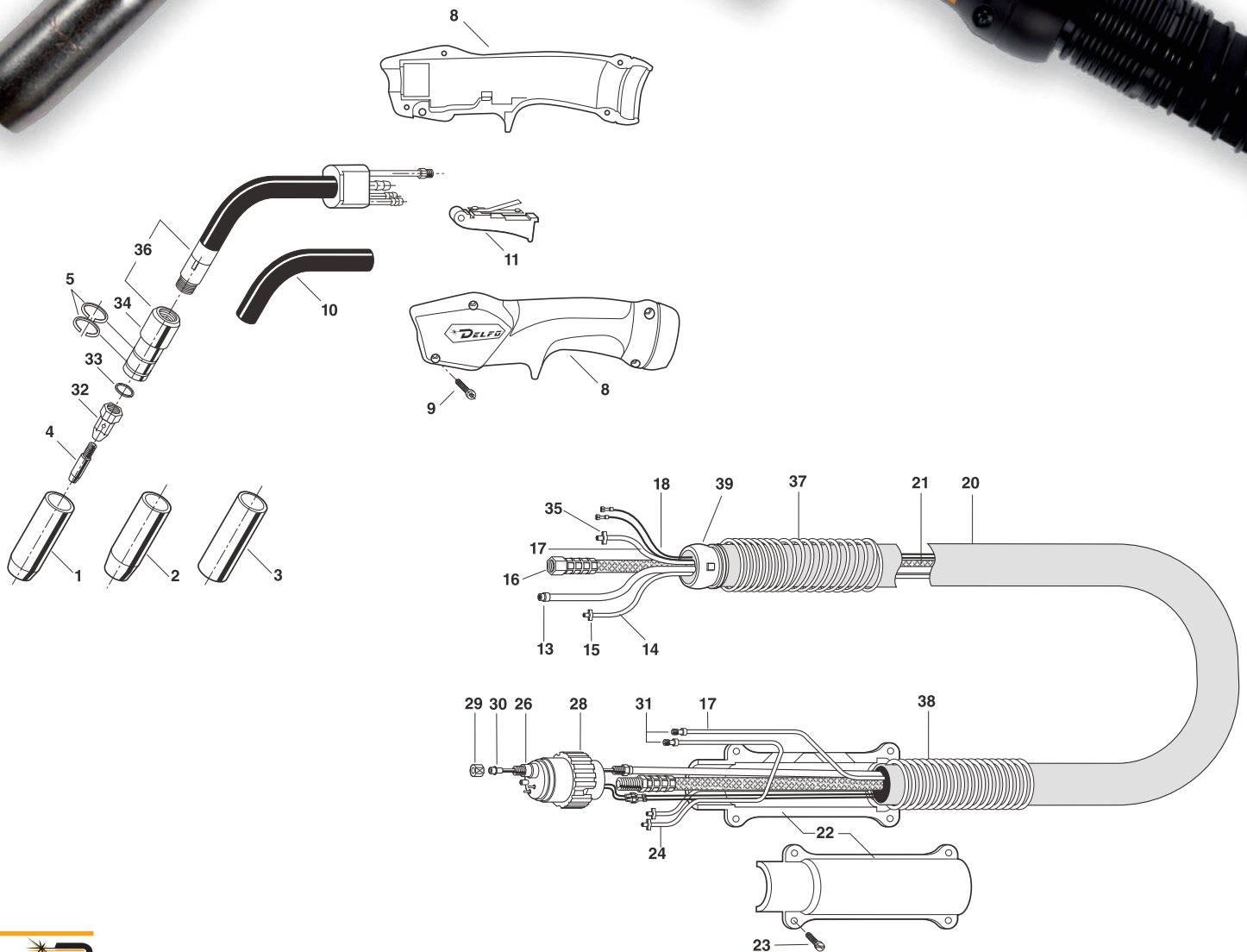
LIQUID COOLED TORCHES TIP M8X30

TECHNICAL DATA

Technical data:	(EN60974-7)
Rating CO₂:	500 A.
Rating mixed Gas (M21):	450 A.
Duty Cycle:	100%
Wire Size:	Ø 0,8 -1,6 mm
Pressione d'esercizio:	Min. 2,5 bar (Max. 3,5 bar)
Min. flow rate:	2,0 l/min.

TIP M8X30

COMPLETE TORCH P/N		
MOD	P/N	LENGTH
DM50.3	501.111.307	3 m.
DM50.4	501.111.407	4 m.



REPLACEMENT PARTS

POS.	DESCRIPTION	P/N	BAG
1*	Nozzle Stnd. Øi. 17	179.105.113	5
2	Tapered Nozzle Øi. 15	179.109.112	5
3	Cylindric Nozzle Øi. 21	179.104.108	5
4	Contact Tip M8x30 CU ø 0,8	147.010.308	25
4	Contact Tip M8x30 CU ø 1,0	147.010.310	25
4	Contact Tip M8x30 CU ø 1,2	147.010.312	25
4	Contact Tip M8x30 CU ø 1,6	147.010.316	25
4	Contact Tip M8x30 CU-CR-ZR ø 0,8	147.020.308	25
4	Contact Tip M8x30 CU-CR-ZR ø 1,0	147.020.310	25
4*	Contact Tip M8x30 CU-CR-ZR ø 1,2	147.020.312	25
4	Contact Tip M8x30 CU-CR-ZR ø 1,6	147.020.316	25
5	Elastic ring	101.101.103	20
8	Handle "DM" series	537.100.111	1
9	Handle case screw	181.103.108	20
10	Wukon insulating tube	140.104.115	1
11	Complete bladeswitch	146.101.112	5
13	Liner Carrier 3m.	145.050.301	1
13	Liner Carrier 4m.	145.050.401	1
14	Gas hose "black"	166.081.051	-
15	Hose clamp Ø 9,5	101.106.202	10
16	Power Cable 3m.	512.100.301	1
16	Power Cable 4m.	512.100.401	1
17	Water in hose "black"	202.090.050	-
18	Control cable	143.101.102	-
20	Protective cover	175.300.280	-
21	Cable assembly 3m.	523.001.302	1
21	Cable assembly 4m.	523.001.402	1
22	Back cable support	156.101.106	1
23	Back cable support screw	181.103.103	20
24	Water out hose "black"	202.090.050	-
26	Euro Connector	142.105.123	1
28	Locking ring	127.102.102	5
29	Liner Nut	117.101.101	10
30*	3,0 m. Liner for wires Ø 1,0 / 1,2	189.060.302	1
30*	4,0 m. Liner for wires Ø 1,0 / 1,2	189.060.402	1
30	3,0 m. Liner for wires Ø 1,2 / 1,6	189.070.302	1
30	4,0 m. Liner for wires Ø 1,2 / 1,6	189.070.402	1
30	3,0 m. Liner for Al. wires Ø 1,0 / 1,2 Teflon	134.060.302	1
30	4,0 m. Liner for Al. wires Ø 1,0 / 1,2 Teflon	134.060.402	1
30	3,0 m. Liner for Al. wires Ø 1,2 / 1,6 Teflon	134.070.302	1
30	4,0 m. Liner for Al. wires Ø 1,2 / 1,6 Teflon	134.070.402	1
30	3,0 m. Liner for Al. wires Ø 0,8 / 1,0 Carbo	134.030.402	1
30	4,0 m. Liner for Al. wires Ø 1,2 / 1,6 Carbo	134.090.402	1
31	Quick Connector	150.108.115	10
32	Gas Diffuser	118.103.106	5
33	Insulating ring	151.105.106	10
34	Nozzle holder	150.112.102	1
35	Hose clamp Ø 10,5	101.106.205	10
36	Torch body with nozzle holder	516.116.103	1
37	Spring (connector side)	141.106.115	1
38	Spring (handle side)	141.106.109	1
39	Knuckle joint	156.102.109	1

(*) Standard

DM.50 - DELFOMIG - LIQUID

LIQUID COOLED TORCHES TIP M8X40

TECHNICAL DATA

Technical data:	(EN60974-7)
Rating CO₂:	500 A.
Rating mixed Gas (M21):	450 A.
Duty Cycle:	100%
Wire Size:	Ø 0,8 -1,6 mm
Pressione d'esercizio:	Min. 2,5 bar (Max. 3,5 bar)
Min. flow rate:	2,0 l/min.

TIP M8X40

COMPLETE TORCH P/N		
MOD	P/N	LENGTH
DM50.3	501.100.307	3 m.
DM50.4	501.100.407	4 m.



REPLACEMENT PARTS

POS.	DESCRIPTION	P/N	BAG
1*	Nozzle Stnd. Øi. 17	179.105.121	5
2	Tapered Nozzle Øi. 15	179.109.110	5
3	Cylindric Nozzle Øi. 21	179.104.113	5
4	Contact Tip M8x40 CU ø 0,8	147.010.108	25
4	Contact Tip M8x40 CU ø 1,0	147.010.110	25
4	Contact Tip M8x40 CU ø 1,2	147.010.112	25
4	Contact Tip M8x40 CU ø 1,6	147.010.116	25
4	Contact Tip M8x40 CU-CR-ZR ø 0,8	147.020.108	25
4	Contact Tip M8x40 CU-CR-ZR ø 1,0	147.020.110	25
4*	Contact Tip M8x40 CU-CR-ZR ø 1,2	147.020.112	25
4	Contact Tip M8x40 CU-CR-ZR ø 1,6	147.020.116	25
5	Elastic ring	101.101.103	20
8	Handle "DM" series	537.100.111	1
9	Handle case screw	181.103.108	20
10	Wukon insulating tube	140.104.115	1
11	Complete bladeswitch	146.101.112	5
13	Liner Carrier 3m.	145.050.301	1
13	Liner Carrier 4m.	145.050.401	1
14	Gas hose "black"	166.081.051	-
15	Hose clamp Ø 9,5	101.106.202	10
16	Power Cable 3m.	512.100.301	1
16	Power Cable 4m.	512.100.401	1
17	Water in hose "black"	202.090.050	-
18	Control cable	143.101.102	-
20	Protective cover	175.300.280	-
21	Cable assembly 3m.	523.001.302	1
21	Cable assembly 4m.	523.001.402	1
22	Back cable support	156.101.106	1
23	Back cable support screw	181.103.103	20
24	Water out hose "black"	202.090.050	-
26	Euro Connector	142.105.123	1
28	Locking ring	127.102.102	5
29	Liner Nut	117.101.101	10
30*	3,0 m. Liner for wires Ø 1,0 / 1,2	189.060.302	1
30*	4,0 m. Liner for wires Ø 1,0 / 1,2	189.060.402	1
30	3,0 m. Liner for wires Ø 1,2 / 1,6	189.070.302	1
30	4,0 m. Liner for wires Ø 1,2 / 1,6	189.070.402	1
30	3,0 m. Liner for Al. wires Ø 1,0 / 1,2 Teflon	134.060.302	1
30	4,0 m. Liner for Al. wires Ø 1,0 / 1,2 Teflon	134.060.402	1
30	3,0 m. Liner for Al. wires Ø 1,2 / 1,6 Teflon	134.070.302	1
30	4,0 m. Liner for Al. wires Ø 1,2 / 1,6 Teflon	134.070.402	1
30	3,0 m. Liner for Al. wires Ø 0,8 / 1,0 Carbo	134.030.402	1
30	4,0 m. Liner for Al. wires Ø 1,2 / 1,6 Carbo	134.090.402	1
31	Quick Connector	150.108.115	10
32	Gas Diffuser	118.103.106	5
33	Insulating ring	151.105.106	10
34	Nozzle holder	150.112.102	1
35	Hose clamp Ø 10,5	101.106.205	10
36	Torch body with nozzle holder	516.116.103	1
37	Spring (connector side)	141.106.115	1
38	Spring (handle side)	141.106.109	1
39	Knuckle joint	156.102.109	1

(*) Standard

DM.55 - DELFOMIG - LIQUID

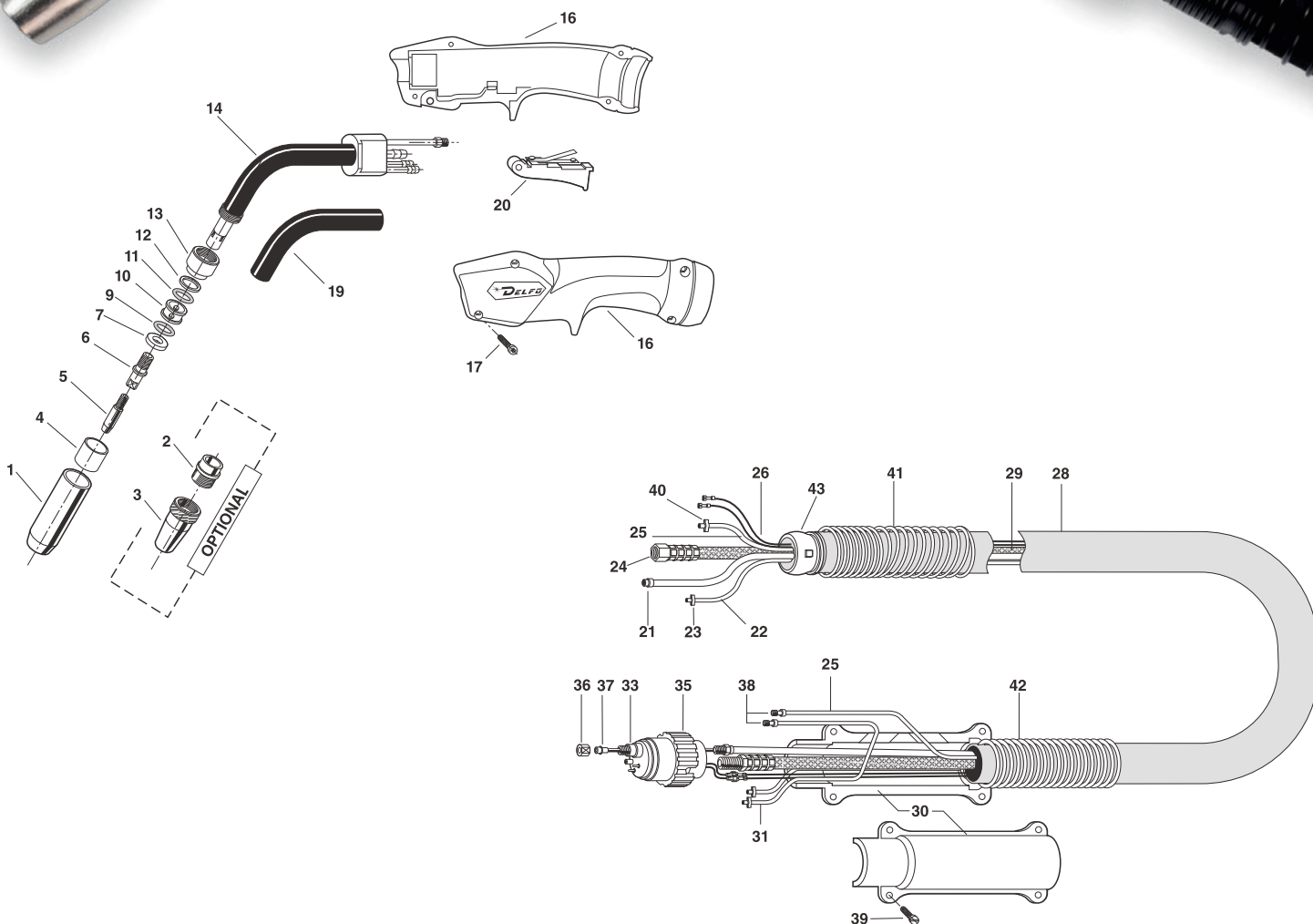
LIQUID COOLED TORCHES

TECHNICAL DATA

Technical data:	(EN60974-7)
Rating CO₂:	550 A.
Rating mixed Gas (M21):	500 A.
Duty Cycle:	100%
Wire Size:	Ø 0,8 -1,6 mm
Pressione d'esercizio:	Min. 2,5 bar (Max. 3,5 bar)
Min. flow rate:	1,4 l/min.

COMPLETE TORCH P/N

MOD	P/N	LENGTH
DM55.3	501.150.307	3 m.
DM55.4	501.150.407	4 m.



REPLACEMENT PARTS

POS.	DESCRIPTION	P/N	BAG
1*	Nozzle Stnd. Øi. 17	179.105.109	5
2	Back Nozzle	179.108.102	5
3	Front Nozzle Øi. 17	179.102.102	5
4	Nozzle Insulator	103.102.102	5
5	Contact Tip M8x30 CU ø 0,8	147.010.308	25
5	Contact Tip M8x30 CU ø 1,0	147.010.310	25
5	Contact Tip M8x30 CU ø 1,2	147.010.312	25
5	Contact Tip M8x30 CU ø 1,6	147.010.316	25
5	Contact Tip M8x30 CU-CR-ZR ø 0,8	147.020.308	25
5	Contact Tip M8x30 CU-CR-ZR ø 1,0	147.020.310	25
5*	Contact Tip M8x30 CU-CR-ZR ø 1,2	147.020.312	25
5	Contact Tip M8x30 CU-CR-ZR ø 1,6	147.020.316	25
6	Gas Diffuser	118.103.103	5
7	Support insulating ring	151.104.104	10
9	Rubber ring	135.101.103	10
10	Water distributor	119.101.103	10
11	Rubber ring	135.101.103	10
12	Pressure ring	151.103.104	10
13	Torchi body locking ring	127.101.103	5
14	Torch body	516.101.106	1
16	Handle "DM" series	537.100.111	1
17	Handle case screw	181.103.108	20
19	Wukon insulating tube	140.104.116	1
20	Complete bladeswitch	146.101.112	5
21	Liner Carrier 3m.	145.050.301	1
21	Liner Carrier 4m.	145.050.401	1
22	Gas hose "black"	166.081.051	-
23	Hose clamp Ø 9,5	101.106.202	10
24	Power Cable 3m.	512.100.301	1
24	Power Cable 4m.	512.100.401	1
25	Water in hose "black"	202.090.050	-
26	Control cable	143.101.102	-
28	Protective cover	175.300.280	-
29	Cable assembly 3m.	523.001.302	1
29	Cable assembly 4m.	523.001.402	1
30	Back cable support	156.101.106	1
31	Water out hose "black"	202.090.050	-
33	Euro Connector	142.105.123	1
35	Locking ring	127.102.102	5
36	Liner Nut	117.101.101	10
37*	3,0 m. Liner for wires Ø 1,0 / 1,2	189.060.302	1
37*	4,0 m. Liner for wires Ø 1,0 / 1,2	189.060.402	1
37	3,0 m. Liner for wires Ø 1,2 / 1,6	189.070.302	1
37	4,0 m. Liner for wires Ø 1,2 / 1,6	189.070.402	1
37	3,0 m. Liner for Al. wires Ø 1,0 / 1,2 Teflon	134.060.302	1
37	4,0 m. Liner for Al. wires Ø 1,0 / 1,2 Teflon	134.060.402	1
37	3,0 m. Liner for Al. wires Ø 1,2 / 1,6 Teflon	134.070.302	1
37	4,0 m. Liner for Al. wires Ø 1,2 / 1,6 Teflon	134.070.402	1
37	3,0 m. Liner for Al. wires Ø 0,8 / 1,0 Carbo	134.030.402	1
37	4,0 m. Liner for Al. wires Ø 1,2 / 1,6 Carbo	134.090.402	1
38	Quick Connector	150.108.115	10
39	Back cable support screw	181.103.103	20
40	Hose clamp Ø 10,5	101.106.205	10
41	Spring (connector side)	141.106.115	1
42	Spring (handle side)	141.106.109	1
43	Knuckle joint	156.102.109	1

(*) Standard

DM.65 - DELFOMIG - LIQUID

LIQUID COOLED TORCHES

TECHNICAL DATA

Technical data:	(EN60974-7)
Rating CO₂:	650 A.
Rating mixed Gas (M21):	600 A.
Duty Cycle:	100%
Wire Size:	Ø 1,0 -2,0 mm
Pressione d'esercizio:	Min. 2,5 bar (Max. 3,5 bar)
Min. flow rate:	1,4 l/min.

COMPLETE TORCH P/N

MOD	P/N	LENGTH
DM65.3	501.160.307	3 m.
DM65.4	501.160.407	4 m.



REPLACEMENT PARTS

POS.	DESCRIPTION	P/N	BAG
1*	Nozzle Stnd. Øi. 19	179.105.107	5
2	Back Nozzle	179.108.101	5
3	Front Nozzle Øi. 19	179.102.101	5
4	Nozzle Insulator	103.102.101	5
5	Contact Tip M8x40 CU ø 1,0	147.010.110	25
5	Contact Tip M8x40 CU ø 1,2	147.010.112	25
5	Contact Tip M8x40 CU ø 1,6	147.010.116	25
5	Contact Tip M8x40 CU ø 2,0	147.010.120	25
5	Contact Tip M8x40 CU-CR-ZR ø 1,0	147.020.110	25
5*	Contact Tip M8x40 CU-CR-ZR ø 1,2	147.020.112	25
5	Contact Tip M8x40 CU-CR-ZR ø 1,6	147.020.116	25
5	Contact Tip M8x40 CU-CR-ZR ø 2,0	147.020.120	25
6	Gas Diffuser	118.103.107	5
7	Support insulating ring	151.104.105	10
9	Rubber ring	135.101.101	10
10	Water distributor	119.101.101	10
11	Rubber ring	135.101.101	10
12	Pressure ring	151.103.105	10
13	Torchi body locking ring	127.101.104	5
14	Torch body	516.101.107	1
16	Handle "DM" series	537.101.111	1
17	Handle case screw	181.103.108	20
19	Wukon insulating tube	140.104.117	1
20	Complete bladeswitch	146.101.112	5
21	Liner Carrier 3m.	145.050.301	1
21	Liner Carrier 4m.	145.050.401	1
22	Gas hose	166.081.051	-
23	Hose clamp Ø 9,5	101.106.202	10
24	Power Cable 3m.	512.100.301	1
24	Power Cable 4m.	512.100.401	1
25	Water in hose	202.090.050	-
26	Control cable	143.101.102	-
28	Protective cover	175.300.280	-
29	Cable assembly 3m.	523.001.302	1
29	Cable assembly 4m.	523.001.402	1
30	Back cable support	156.101.106	1
31	Water out hose	202.090.050	-
33	Euro Connector	142.105.123	1
35	Locking ring	127.102.102	5
36	Liner Nut	117.101.101	10
37*	3,0 m. Liner for wires Ø 1,0 / 1,2	189.060.302	1
37*	4,0 m. Liner for wires Ø 1,0 / 1,2	189.060.402	1
37	3,0 m. Liner for wires Ø 1,2 / 1,6	189.070.302	1
37	4,0 m. Liner for wires Ø 1,2 / 1,6	189.070.402	1
37	3,0 m. Liner for Al. wires Ø 1,0 / 1,2 Teflon	134.060.302	1
37	4,0 m. Liner for Al. wires Ø 1,0 / 1,2 Teflon	134.060.402	1
37	3,0 m. Liner for Al. wires Ø 1,2 / 1,6 Teflon	134.070.302	1
37	4,0 m. Liner for Al. wires Ø 1,2 / 1,6 Teflon	134.070.402	1
37	3,0 m. Liner for Al. wires Ø 0,8 / 1,0 Carbo	134.030.402	1
37	4,0 m. Liner for Al. wires Ø 1,2 / 1,6 Carbo	134.090.402	1
38	Quick Connector	150.108.115	10
39	Back cable support screw	181.103.103	20
40	Hose clamp Ø 10,5	101.106.205	10
41	Spring (connector side)	141.106.115	1
42	Spring (handle side)	141.106.109	1
43	Knuckle joint	156.102.109	1

(*) Standard



50

1973 – 2024

years

of **experience**
and **passion**

DELFOAUTOMIG

AIR AND LIQUID COOLED AUTOMIG TORCHES



BEING DIFFERENT

PREMIUM QUALITY

MADE IN ITALY



Design and manufacture
of special torches with lengths
and angles on request

AM.3 - DELFOAUTOMIG - AIR

AIR COOLED AUTOMIG TORCHES

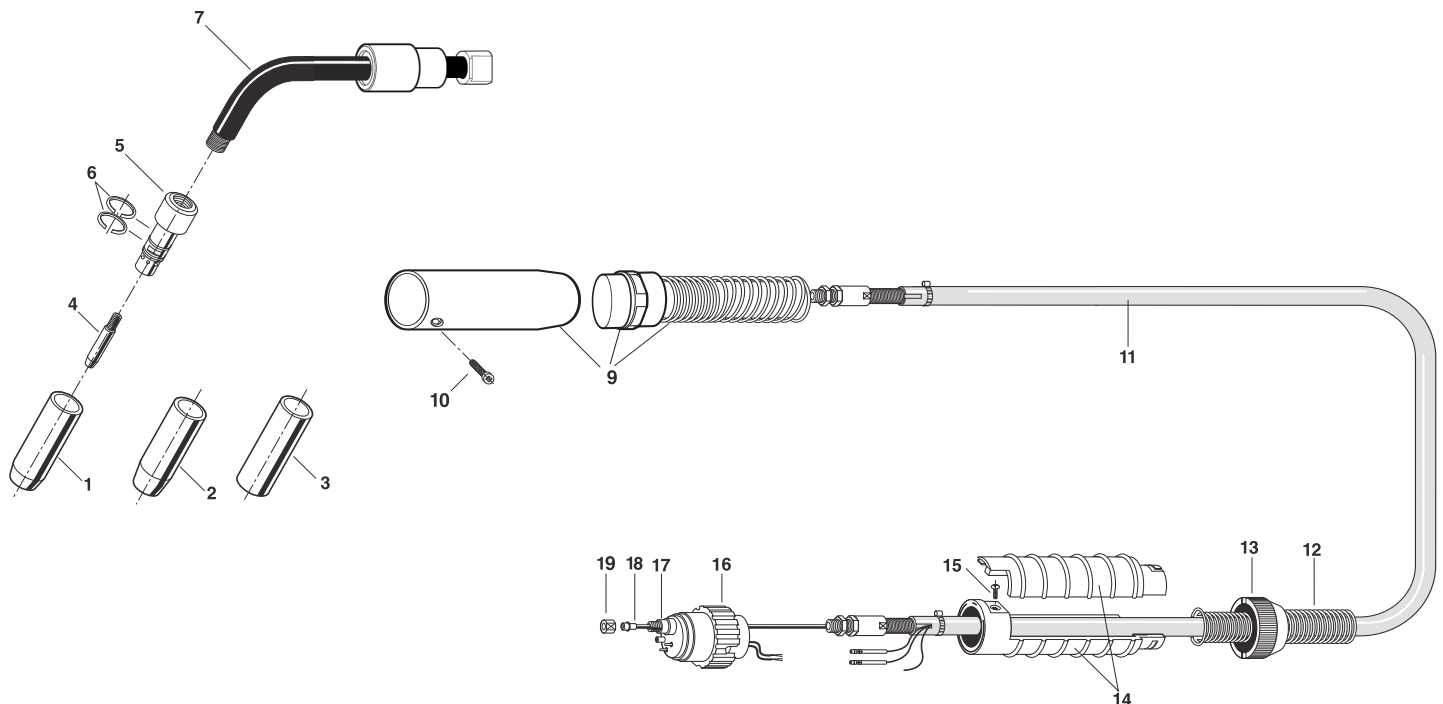
TECHNICAL DATA

Technical data:	(EN60974-7)
Rating CO₂:	340A.
Rating mixed Gas (M21):	220 A.
Duty Cycle:	60%
Wire Size:	0,8-1,2 mm



COMPLETE TORCH P/N

MOD	ANGLE	P/N	LENGTH
AM.3	0°	270..031.301	3m
AM.3	22°	272.231.301	3m
AM.3	45°	274.531.301	3m



REPLACEMENT PARTS

POS.	DESCRIPTION	P/N	BAG
1*	Nozzle Stnd. Øi. 16	179.105.115	5
2	Tapered Nozzle Øi. 13	179.109.124	5
3	Cylindric Nozzle Øi. 20	179.104.112	5
4	Contact Tip M8x40 CU ø 0,8	147.010.108	25
4*	Contact Tip M8x40 CU ø 1,0	147.010.110	25
4	Contact Tip M8x40 CU ø 1,2	147.010.112	25
4	Contact Tip M8x40 CU-CR-ZR ø 0,8	147.020.108	25
4	Contact Tip M8x40 CU-CR-ZR ø 1,0	147.020.110	25
4	Contact Tip M8x40 CU-CR-ZR ø 1,2	147.020.112	25
5	Gas Diffuser	118.102.119	5
6	Elastic Ring	101.101.105	20
7	0° Torch body with insulator	216.003.501	1
7	22° Torch body with insulator	216.223.501	1
7	45° Torch body with insulator	216.453.501	1
9	Cylindric Handle with locking ring / spring	137.106.200	1
10	Handle case screw	181.103.104	20
11	Complete coaxial cable for Automation 3m.	108.503.302	1
12	Spring (connector side)	141.106.107	1
13	Connector locking ring	127.105.101	1
14	Back cable support	156.101.103	1
15	Back cable support screw	181.106.101	20
16	Locking ring	127.102.102	5
17	Euro Connector	142.105.113	1
18	3,0 m. Liner for wires Ø 0,6 / 1,0	130.020.302	1
18*	3,0 m. Liner for wires Ø 1,0 / 1,2	130.050.302	1
18	3,0 m. Liner for Al. wires Ø 1,0 / 1,2 Teflon	134.060.302	1
18	3,0 m. Liner for Al. wires Ø 0,8 / 1,0 Carbo	134.030.402	1
18	4,0 m. Liner for Al. wires Ø 1,2 / 1,6 Carbo	134.090.402	1
19	Liner Nut	117.101.101	10

(*) Standard

AM.30 - DELFOAUTOMIG - LIQUID

AIR COOLED AUTOMIG TORCHES

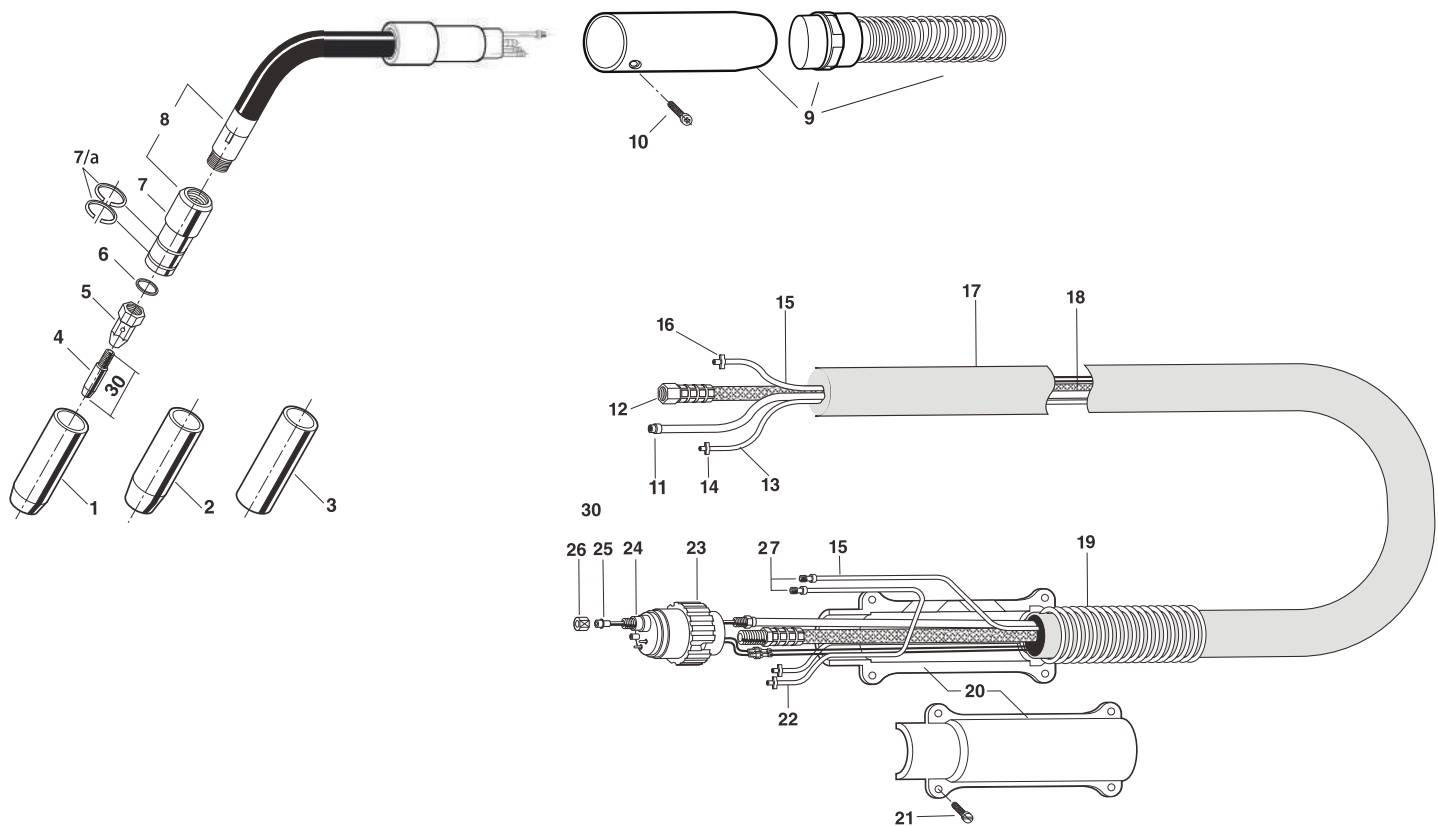
TECHNICAL DATA

Technical data:	(EN60974-7)
Rating CO₂:	300 A.
Rating mixed Gas (M21):	270 A.
Duty Cycle:	100%
Wire Size:	Ø 0,8 - 1,2 mm
Pressione d'esercizio:	Min. 2,5 bar (Max. 3,5 bar)
Min. flow rate:	2,0 l/min.



COMPLETE TORCH P/N

MOD	ANGLE	P/N	LENGTH
AM.30	0°	270.053.301	3m
AM.30	22°	272.253.301	3m
AM.30	45°	274.553.301	3m



REPLACEMENT PARTS

POS.	DESCRIPTION	P/N	BAG
1*	Nozzle Stnd. Øi. 15	179.105.110	5
2	Tapered Nozzle Øi. 12	179.109.107	5
3	Cylindric Nozzle Øi. 18	179.104.105	5
4	Contact Tip M8x30 CU-CR-ZR ø 0,8	147.020.308	25
4	Contact Tip M8x30 CU-CR-ZR ø 1,0	147.020.310	25
4*	Contact Tip M8x30 CU-CR-ZR ø 1,2	147.020.312	25
5	Gas Diffuser	118.103.105	5
6	Insulating ring	151.105.107	10
7	Nozzle holder	150.112.103	1
7/a	Elastic ring	101.101.104	20
8	0° Torch body with insulator	216.005.501	1
8	22° Torch body with insulator	216.225.501	1
8	45° Torch body with insulator	216.455.501	1
9	Cylindric Handle with locking ring / spring	137.106.200	1
10	Handle case screw	181.103.104	20
11	Liner Carrier 3m.	145.050.301	1
12	Power Cable 3m.	512.100.301	1
13	Gas hose "black"	166.081.051	-
14	Hose clamp Ø 9,5	101.106.202	10
15	Water in hose	202.090.050	-
16	Hose clamp Ø 10,5	101.106.205	10
17	Protective cover	175.300.280	-
18	Cable assembly 3m.	523.051.307	1
19	Spring (connector side)	141.106.109	1
20	Back cable support	156.101.106	1
21	Back cable support screw	181.103.103	20
22	Water out hose "black"	202.090.050	-
23	Locking ring	127.102.102	5
24	Euro Connector	142.105.123	1
25*	3,0 m. Liner for wires Ø 1,0 / 1,2	130.050.302	1
25	3,0 m. Liner for Al. wires Ø 1,0 / 1,2 Teflon	134.060.302	1
25	3,0 m. Liner for Al. wires Ø 0,8 / 1,0 Carbo	134.030.402	1
25	4,0 m. Liner for Al. wires Ø 1,2 / 1,6 Carbo	134.090.402	1
26	Liner Nut	117.101.101	10
27	Quick Connector	150.108.115	10

(*) Standard

AM.50 - DELFOAUTOMIG - LIQUID

AIR COOLED AUTOMIG TORCHES

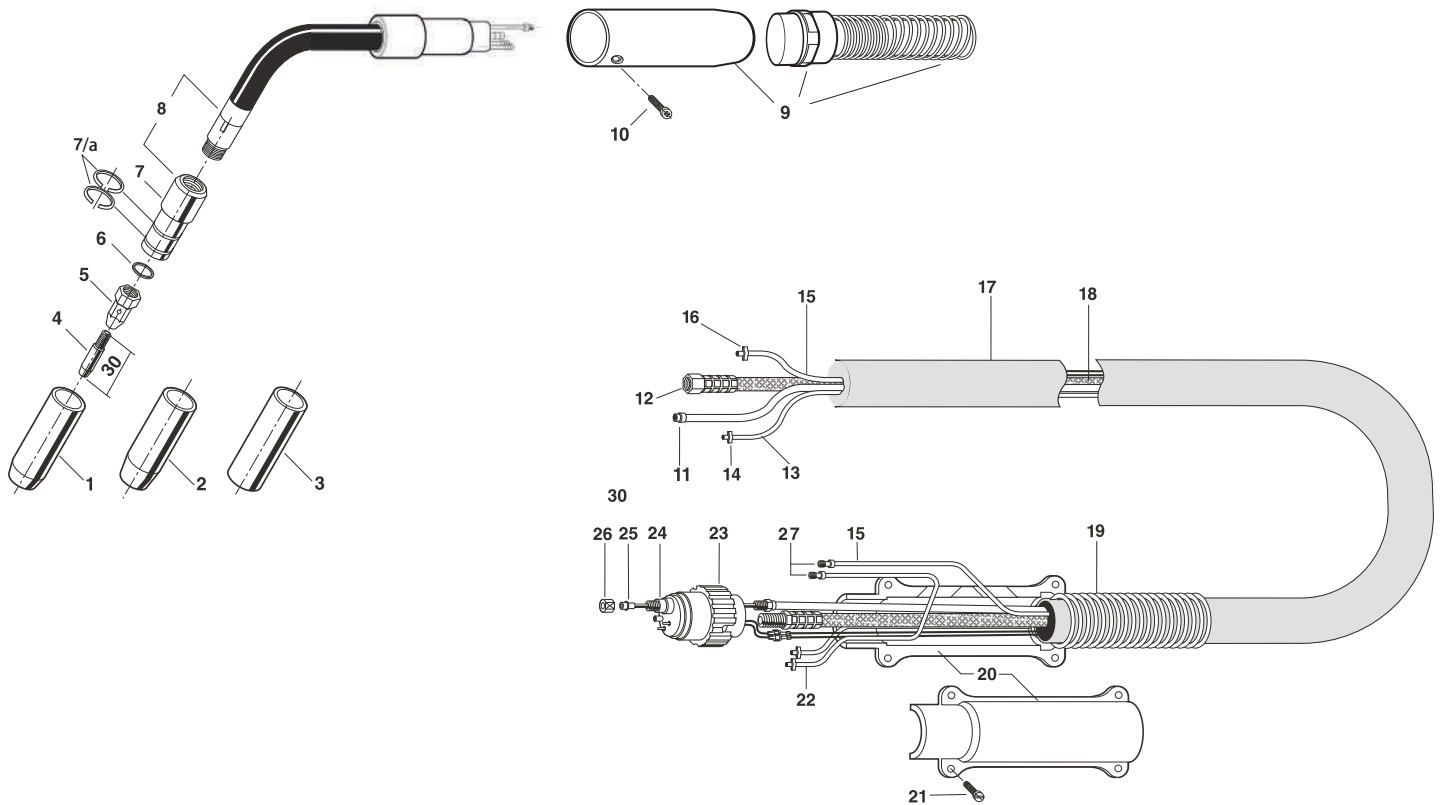
TECHNICAL DATA

Technical data:	(EN60974-7)
Rating CO₂:	500 A.
Rating mixed Gas (M21):	450 A.
Duty Cycle:	100%
Wire Size:	Ø 0,8 -1,6 mm
Pressione d'esercizio:	Min. 2,5 bar (Max. 3,5 bar)
Min. flow rate:	2,0 l/min.



COMPLETE TORCH P/N

MOD	ANGLE	P/N	LENGTH
AM.50	0°	270.054.301	3m
AM.50	22°	272.254.301	3m
AM.50	45°	274.554.301	3m



REPLACEMENT PARTS

POS.	DESCRIPTION	P/N	BAG
1*	Nozzle Stnd. Øi. 17	179.105.113	5
2	Tapered Nozzle Øi. 15	179.109.112	5
3	Cylindric Nozzle Øi. 21	179.104.108	5
4	Contact Tip M8x30 CU-CR-ZR ø 0,8	147.020.308	25
4	Contact Tip M8x30 CU-CR-ZR ø 1,0	147.020.310	25
4*	Contact Tip M8x30 CU-CR-ZR ø 1,2	147.020.312	25
4	Contact Tip M8x30 CU-CR-ZR ø 1,6	147.020.316	25
5	Gas Diffuser	118.103.106	10
6	Insulating ring	151.105.106	10
7	Nozzle holder	150.112.102	1
7/a	Elastic ring	101.101.103	20
8	0° Torch body with insulator	216.005.502	1
8	22° Torch body with insulator	216.225.502	1
8	45° Torch body with insulator	216.455.502	1
9	Cylindric Handle with locking ring / spring	137.106.200	1
10	Handle case screw	181.103.104	20
11	Liner Carrier 3m.	145.050.301	1
12	Power Cable 3m.	512.100.301	1
13	Gas hose "black"	166.081.051	-
14	Hose clamp Ø 9,5	101.106.202	10
15	Water in hose	202.090.050	-
16	Hose clamp Ø 10,5	101.106.205	10
17	Protective cover	175.300.280	-
18	Cable assembly 3m.	523.052.307	1
19	Spring (connector side)	141.106.109	1
20	Back cable support	156.101.106	1
21	Back cable support screw	181.103.103	20
22	Water out hose "black"	202.090.050	-
23	Locking ring	127.102.102	5
24	Euro Connector	142.105.123	1
25*	3,0 m. Liner for wires Ø 1,0 / 1,2	130.060.302	1
25	3,0 m. Liner for wires Ø 1,2 / 1,6	130.070.302	1
25	3,0 m. Liner for Al. wires Ø 1,0 / 1,2 Teflon	134.060.302	1
25	3,0 m. Liner for Al. wires Ø 1,2 / 1,6 Teflon	134.070.302	1
25	3,0 m. Liner for Al. wires Ø 0,8 / 1,0 Carbo	134.030.402	1
25	4,0 m. Liner for Al. wires Ø 1,2 / 1,6 Carbo	134.090.402	1
26	Liner Nut	117.101.101	10
27	Quick Connector	150.108.115	10

(*) Standard

AM.55 - DELFOAUTOMIG - LIQUID

AIR COOLED AUTOMIG TORCHES

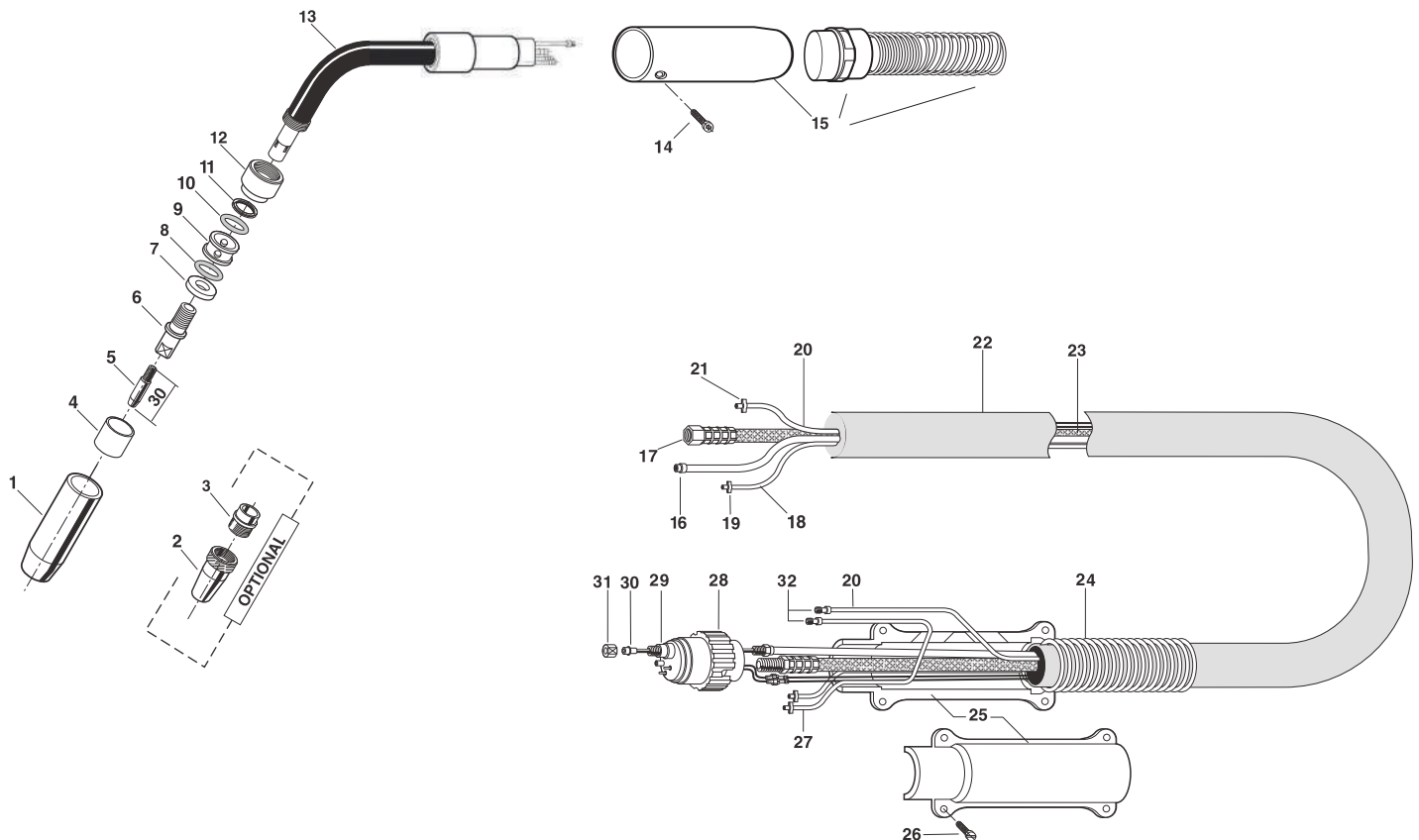
TECHNICAL DATA

Technical data:	(EN60974-7)
Rating CO₂:	550 A.
Rating mixed Gas (M21):	500 A.
Duty Cycle:	100%
Wire Size:	Ø 0,8 -1,6 mm
Pressione d'esercizio:	Min. 2,5 bar (Max. 3,5 bar)
Min. flow rate:	1,4 l/min.



COMPLETE TORCH P/N

MOD	ANGLE	P/N	LENGTH
AM.55	0°	270.042.301	3m
AM.55	22°	272.242.301	3m
AM.55	45°	274.542.301	3m



REPLACEMENT PARTS

POS.	DESCRIPTION	P/N	BAG
1*	Nozzle Stnd. Øi. 17	179.105.109	5
2	Front Nozzle Øi. 17	179.102.102	5
3	Back Nozzle	179.108.102	5
4	Nozzle Insulator	103.102.102	5
5	Contact Tip M8x30 CU-CR-ZR ø 0,8	147.020.308	5
5	Contact Tip M8x30 CU-CR-ZR ø 1,0	147.020.310	25
5*	Contact Tip M8x30 CU-CR-ZR ø 1,2	147.020.312	25
5	Contact Tip M8x30 CU-CR-ZR ø 1,6	147.020.316	25
6	Gas Diffuser	118.103.103	5
7	Support Insulating ring	151.104.104	10
8	Rubber ring	135.101.103	10
9	Water distributor	119.101.103	10
10	Rubber ring	135.101.103	10
11	Pressure ring	151.103.104	10
12	Torchi body locking ring	127.101.103	5
13	0° Torch body with insulator	216.004.501	1
13	22° Torch body with insulator	216.224.501	1
13	45° Torch body with insulator	216.454.501	1
14	Handle case screw	181.103.104	20
15	Cylindric Handle with locking ring / spring	137.106.200	1
16	Liner Carrier 3m.	145.050.301	1
17	Power Cable 3m.	512.100.301	1
18	Gas hose "black"	166.081.051	-
19	Hose clamp Ø 9,5	101.106.202	10
20	Water in hose	202.090.050	-
21	Hose clamp Ø 10,5	101.106.205	10
22	Protective cover	175.300.280	-
23	Cable assembly 3m.	523.052.307	1
24	Spring (connector side)	141.106.109	1
25	Back cable support	156.101.106	1
26	Back cable support screw	181.103.103	10
27	Water out hose "black"	202.090.050	-
28	Locking ring	127.102.102	5
29	Euro Connector	142.105.123	1
30*	3,0 m. Liner for wires Ø 1,0 / 1,2	130.060.302	1
30	3,0 m. Liner for wires Ø 1,2 / 1,6	130.070.302	1
30	3,0 m. Liner for Al. wires Ø 1,0 / 1,2 Teflon	134.060.302	1
30	3,0 m. Liner for Al. wires Ø 1,2 / 1,6 Teflon	134.070.302	1
30	3,0 m. Liner for Al. wires Ø 0,8 / 1,0 Carbo	134.030.402	1
30	4,0 m. Liner for Al. wires Ø 1,2 / 1,6 Carbo	134.090.402	1
31	Liner Nut	117.101.101	10
32	Quick Connector	150.108.115	10

(*) Standard

DELFOAUTOMIG

AIR AND LIQUID COOLED AUTOMIG TORCHES



AM.3



AM.30

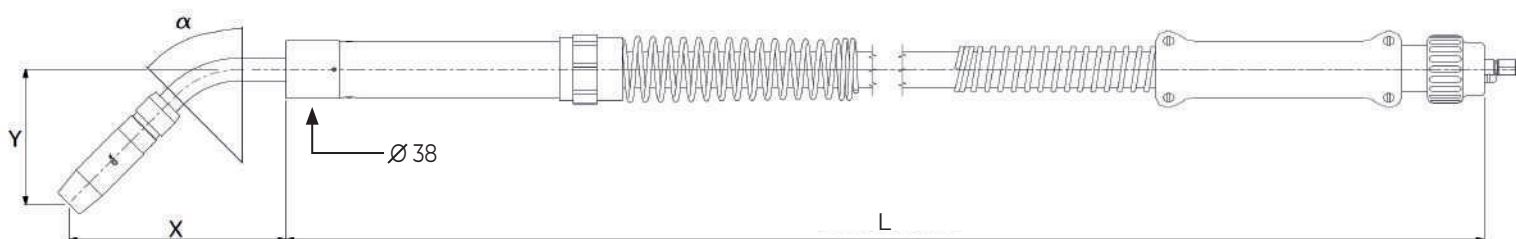


AM.50



AM.55

MOD.	GEOMETRY	X	Y	DUTY CYCLE	RATING		Ø WIRE
	α	(mm)	(mm)		CO2	M21	(mm)
AM3	0°	176	--	60%	A 340	A 220	1,2 - 0,8
AM3	22°	169	42	60%	A 340	A 220	1,2 - 0,8
AM3	45°	142,3	88,5	60%	A 340	A 220	1,2 - 0,8
AM30	0°	157,5	--	100%	A 300	A 270	1,6 - 0,8
AM30	22°	151	35	100%	A 300	A 270	1,6 - 0,8
AM30	45°	129	75,5	100%	A 300	A 270	1,6 - 0,8
AM50	0°	179	--	100%	A 500	A 450	1,6 - 0,8
AM50	22°	171,5	40,5	100%	A 500	A 450	1,6 - 0,8
AM50	45°	146	86	100%	A 500	A 450	1,6 - 0,8
AM55	0°	181,5	--	100%	A 550	A 500	1,6 - 0,8
AM55	22°	174	41,5	100%	A 550	A 500	1,6 - 0,8
AM55	45°	148	87,5	100%	A 550	A 500	1,6 - 0,8



IMPORTANT

Design and manufacture of special torches with lengths and angles on request.



SERVICE & QUALITY

PREMIUM QUALITY

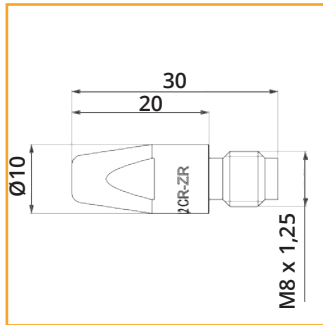
MADE IN ITALY

REPLACEMENT & ACCESSORIES

OTHER CONTACT TIPS AVAIABLE

Contact Tips Ø 10 M8X30

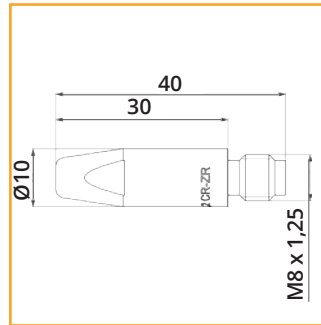
Cu - Cr - Zr



Ø WIRE	P/N
Ø 1,0	147.053.010
Ø 1,2	147.053.012
Ø 1,6	147.053.016

Contact Tips Ø 10 M8X40

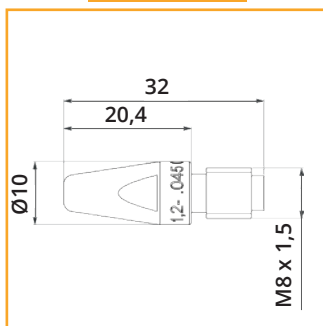
Cu - Cr - Zr



Ø WIRE	P/N
Ø 1,0	147.054.010
Ø 1,2	147.054.012
Ø 1,6	147.054.016

Contact Tip Ø 10 M8X32 type FR

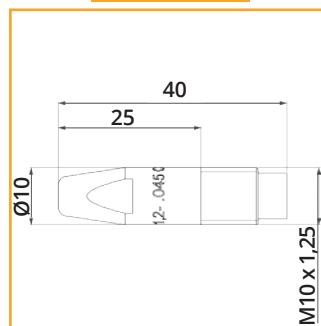
Cu - Cr - Zr



Ø WIRE	P/N
Ø 1,0	FR08-47210
Ø 1,2	FR08-47212
Ø 1,6	FR08-47216

Contact Tip Ø 10 M10X40 type FR

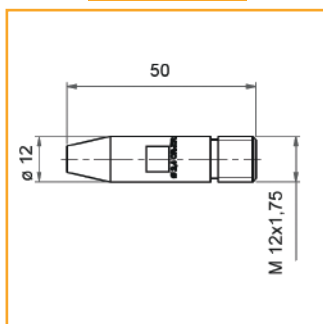
Cu - Cr - Zr



Ø WIRE	P/N
Ø 1,0	FR10-47210
Ø 1,2	FR10-47212
Ø 1,6	FR10-47216

Submerged Arc Welding Ø 12 Esab type

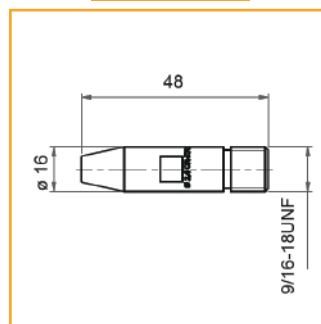
Cu - Cr - Zr



Ø WIRE	P/N
Ø 2,4	147.220.024
Ø 3,0	147.220.030
Ø 3,2	147.220.032

Submerged Arc Welding Ø 16 Lincoln type

Cu - Cr - Zr



Ø WIRE	P/N
Ø 1,6	147.120.016
Ø 2,0	147.120.020
Ø 2,4	147.120.024
Ø 3,0	147.120.030
Ø 3,2	147.120.032
Ø 4,0	147.120.040
Ø 5,0	147.120.050

P.S. Possibility of making tips with different lenght and threads

REPLACEMENT & ACCESSORIES MIG - MAG

Conduit Liners

DESCRIPTION	COLOR	Ø I.D/O.D.	P/N	COIL.
Covered Liner	blue	1,5 / 4,0	155.024.015	53 m.
Covered Liner	yellow	2,0 / 4,8	155.024.820	53 m.
Covered Liner	red	2,0 / 4,0	155.024.020	53 m.
Covered Liner	white	2,4 / 4,8	155.024.824	53 m.
Uncovered Liner	-	2,0 / 4,8	155.014.820	53 m.
Uncovered Liner	-	2,4 / 4,8	155.014.824	53 m.

Cables, Hoses & Cover for MIG-MAG Torches

DESCRIPTION	COLOR	Ø I.D/O.D.	P/N	COIL.
Control Wire	black / brown	-	143.101.102	200 m.
Water in/out Hose	black	5,0 / 9,0	202.090.050	100 m.
Gas Hose	black	5,0 / 8,0	166.081.051	300 m.
Protective cover	black	28 / 31	175.300.280	100 m.

Other Accessories

DESCRIPTION	P / N	BAG
Male spring pin for Air Euro connector	183.102.100	10
Male spring pin for Water Euro connector	183.102.103	10
Male cylindrical lead	124.102.104	10
Female cylindrical lead	124.101.104	10
Trigger lead	124.103.101	10
Gas plug for Euro connector	150.110.101	10
"O" ring for Euro Gas plug	101.102.110	10
Blu cap	156.109.110	10
Red cap	156.109.109	10



50

1973 – 2024

years

of **experience**
and **passion**

DELFOAUTOTIG
LIQUID - AIR COOLED TORCHES

BEING DIFFERENT

PREMIUM QUALITY

MADE IN ITALY

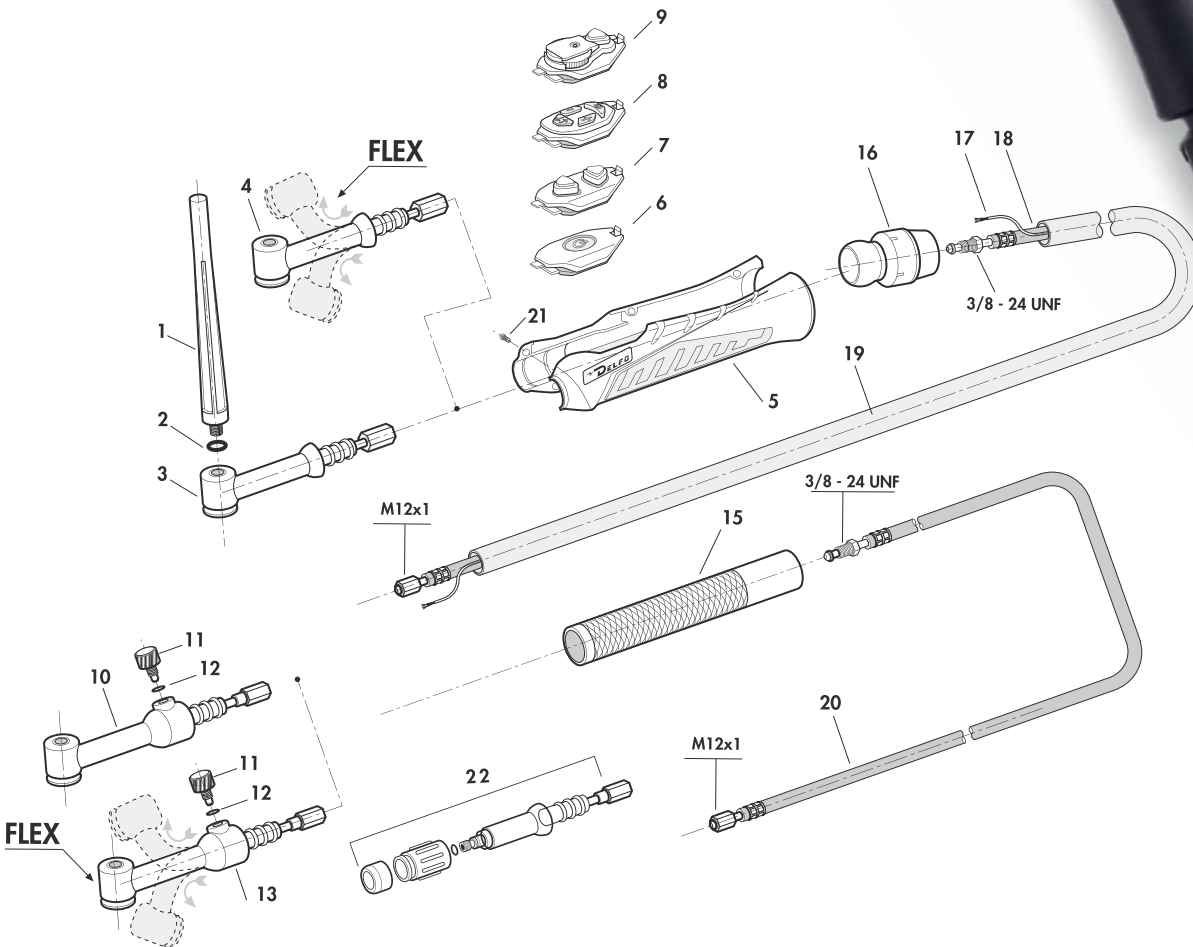
- » **Ergonomic handle with "Grip" insert for best accessibility - optimum balance.**
- » **Series of modular switching and control functions integrated into the handle - Easy application.**
- » **Ball joint with optimum movement radius.**
- » **New design of the back box cable support, machine side.**

DT.9 / 9V - DELFOTIG - AIR

AIR COOLED TORCHES

TECHNICAL DATA

Technical data:	(EN60974-7)
Rating:	110 A. DC 80 A. AC
Duty Cycle:	35%
Tungsten Electrodes:	0,5-1,6 mm



COMPLETE TORCH P/N

MOD.	EU	D. 50/70	MK
DT.9.4	401.011.040	401.011.041	401.011.043
DT.9.8	401.011.080	401.011.081	401.011.083
DT.9F.4 (Flex)	401.111.040	401.111.041	401.111.043
DT.9F.8 (Flex)	401.111.080	401.111.081	401.111.083
DT.9A.4 (DIRITTA)	401.400.040	401.400.041	-
DT.9A.8 (DIRITTA)	401.400.080	401.400.081	-
DT.9V.4	401.200.040	401.200.041	-
DT.9V.8	401.200.080	401.200.081	-
DT.9VF.4	401.300.040	401.300.041	-
DT.9VF.8	401.300.080	401.300.081	-

REPLACEMENT PARTS

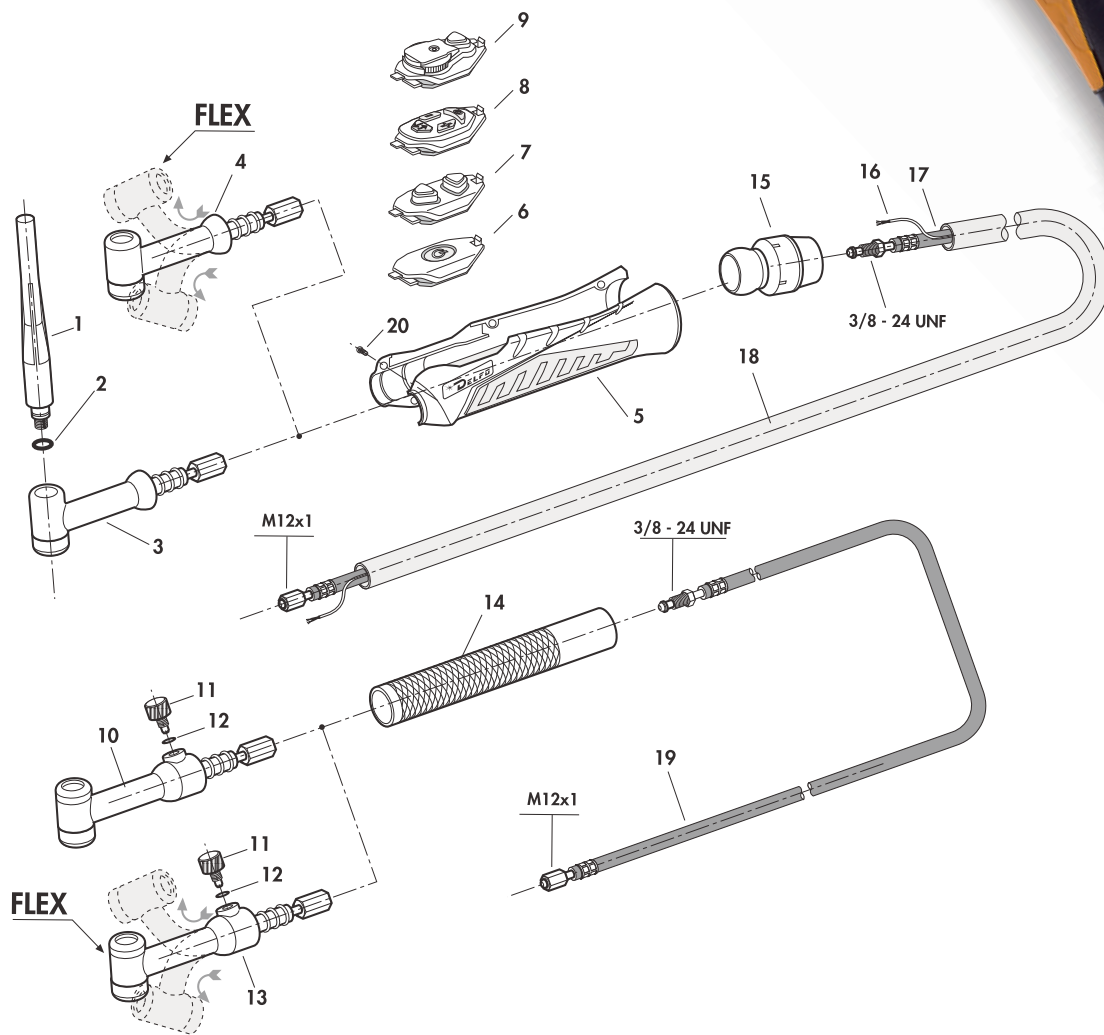
POS.	DESCRIPTION	P/N	BAG
1	Long Back cap TIG 9-20	324.010.404	10
2	"O" Ring	324.010.804	10
3	Stnd. Torch Body	416.103.009	1
4	Flex Torch Body	416.107.009	1
5	Handle with screw	437.101.101	1
6	Single button switch	439.000.101	1
7	Two buttons switch	439.000.102	1
8	Four buttons switch	439.000.103	1
9	Switch with potentiometer 4,7 Kohm	439.001.004	1
9	Switch with potentiometer 10 Kohm	439.001.010	1
10	Torch body with Valve	416.105.009	1
11	Valve with "O" ring	330.101.101	1
12	"O" ring	101.102.112	10
13	Flex torch body with Valve	416.108.009	1
15	Round handle	437.102.101	1
16	Knuckle joint	456.102.101	1
17	Control cable with connector 4m.	443.001.401	1
17	Control cable with connector 8m.	443.001.801	1
18	Power Cable 4m.	324.010.404	1
18	Power Cable 8m.	324.010.804	1
19	Protective Cover "Tubix"	175.002.220	-
20	Power Cable for Valve 4m.	324.010.404	1
20	Power Cable for Valve 8m.	324.010.804	1
21	Handle screw	181.104.103	20
22	Straight torch body	316.106.503	1

DT.17/ 17V - DELFOTIG - AIR

AIR COOLED TORCHES

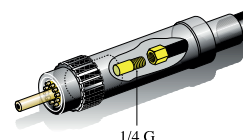
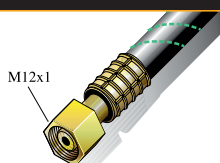
TECHNICAL DATA

Technical data:	(EN60974-7)
Rating:	140A. DC 100 A. AC
Duty Cycle:	35%
Tungsten Electrodes:	0,5-2,4 mm



COMPLETE TORCH P/N

MOD.	EU	D. 50/70	MK
DT.17.4	410.011.040	410.011.041	410.011.043
DT.17.8	410.011.080	410.011.081	410.011.083
DT.17F.4 (Flex)	410.111.040	410.111.041	410.111.043
DT.17F.8 (Flex)	410.111.080	410.111.081	410.111.083
DT.17V.4	410.200.040	410.200.041	-
DT.17V.8	410.200.080	410.200.081	-
DT.17VF.4	410.300.040	410.300.041	-
DT.17VF.8	410.300.080	410.300.081	-



REPLACEMENT PARTS

POS.	DESCRIPTION	P/N	BAG
1	Long Back cap TIG 17-26-18	321.102.101	10
2	"O" Ring	101.102.111	10
3	Stnd. Torch Body	416.103.017	1
4	Flex Torch Body	416.107.017	1
5	Handle with screw	437.101.101	1
6	Single button switch	439.000.101	1
7	Two buttons switch	439.000.102	1
8	Four buttons switch	439.000.103	1
9	Switch with potentiometer 4,7 Kohm	439.001.004	1
9	Switch with potentiometer 10 Kohm	439.001.010	1
10	Torch body with Valve	416.105.017	1
11	Valve with "O" ring	330.101.101	1
12	"O" ring	101.102.112	10
13	Flex torch body with Valve	416.108.017	1
14	Round handle	437.102.101	1
15	Knuckle joint	456.102.101	1
16	Control cable with connector 4m.	443.001.401	1
16	Control cable with connector 8m.	443.001.801	1
17	Power Cable 4m.	324.010.404	1
17	Power Cable 8m.	324.010.804	1
18	Protective Cover "Tubix"	175.002.220	-
19	Power Cable for Valve 4m.	324.010.404	1
19	Power Cable for Valve 8m.	324.010.804	1
20	Handle screw	181.104.103	20

DT.26 / 26V - DELFOTIG - AIR

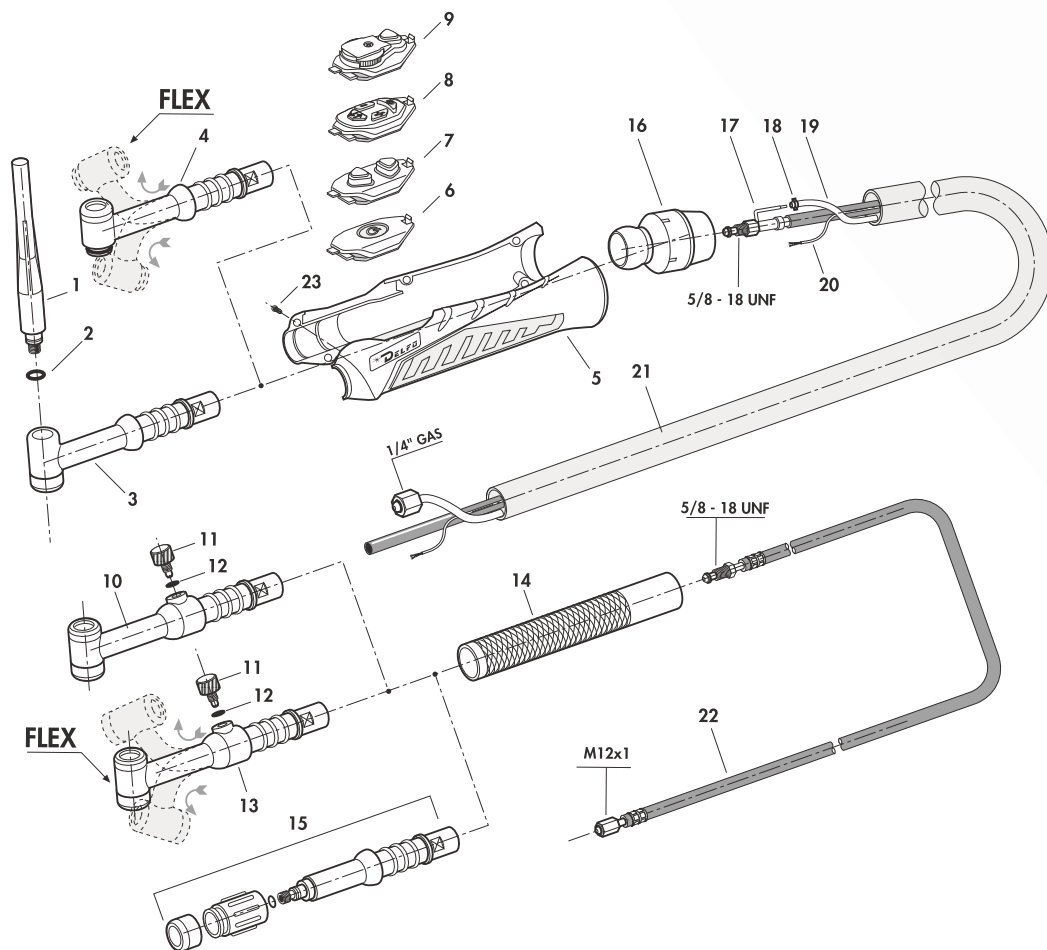
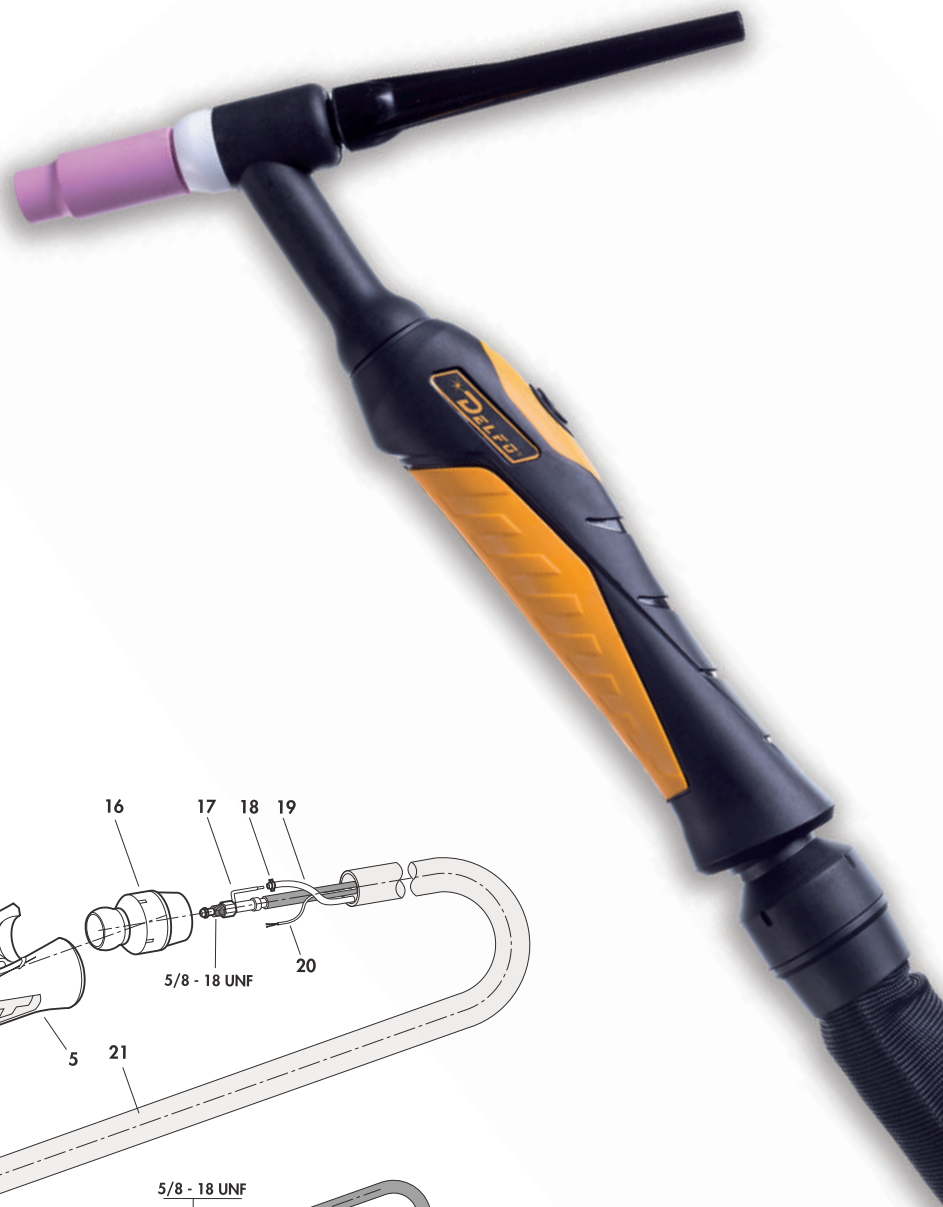
AIR COOLED TORCHES

TECHNICAL DATA DT.26

Technical data:	(EN60974-7)
Rating:	250A. DC 200 A. AC
Duty Cycle:	60%
Tungsten Electrodes:	0,5-4,0 mm

TECHNICAL DATA DT.26V

Technical data:	(EN60974-7)
Rating:	180A. DC 150 A. AC
Duty Cycle:	35%
Tungsten Electrodes:	0,5-4,0 mm



COMPLETE TORCH P/N

MOD.	EU	D. 35/50	D. 50/70	MK
DT.26.4	420.011.040	420.011.041		420.011.043
DT.26.8	420.011.080	420.011.081		420.011.083
DT.26F.4 (Flex)	420.111.040	420.111.041		420.111.043
DT.26F.8 (Flex)	420.111.080	420.111.081		420.111.083
DT.26A.4 (Diritta)	420.401.040	420.401.041		
DT.26A.8 (Diritta)	420.401.080	420.401.081		
DT.26V.4 (Valvola)		420.200.040	420.200.041	
DT.26V.8 (Valvola)		420.200.080	420.200.081	
DT.26VF.4 (Valv.Flex)		420.300.040	420.300.041	
DT.26VF.8 (Valv.Flex)		420.300.080	420.300.081	

REPLACEMENT PARTS

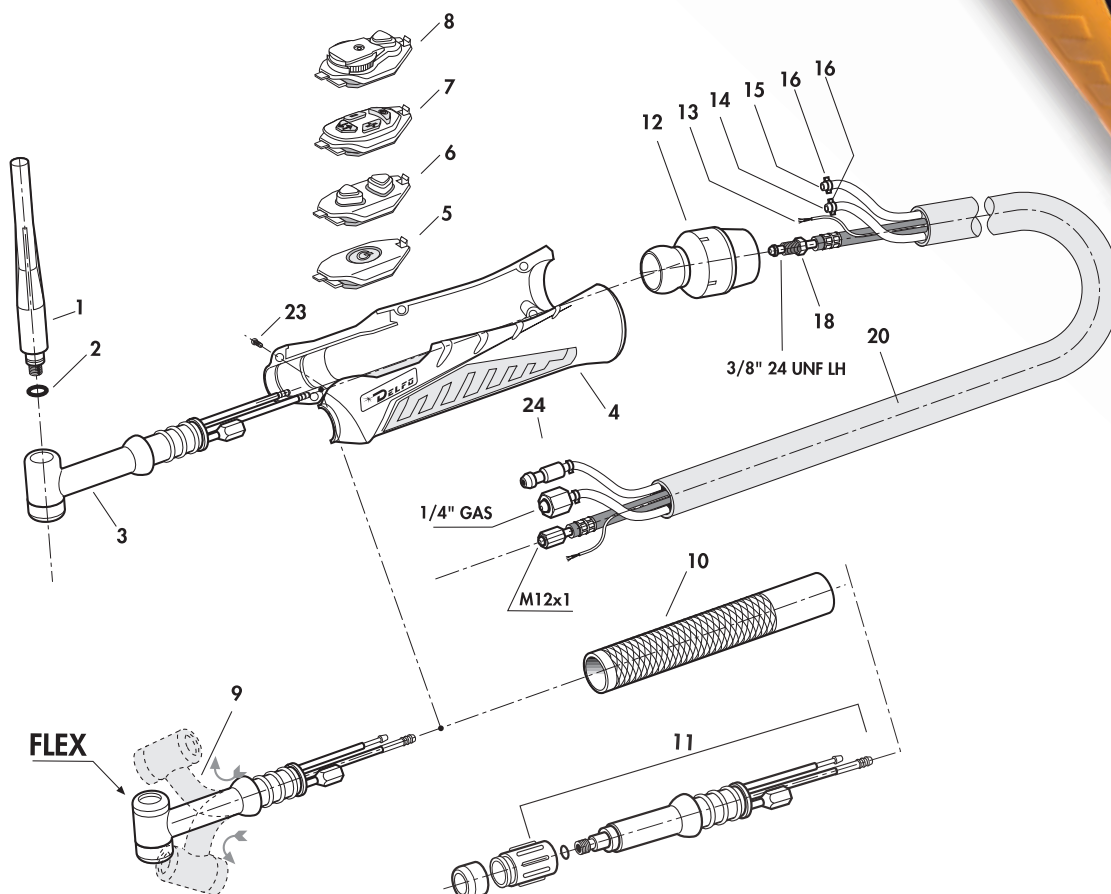
POS.	DESCRIPTION	P/N	BAG
1	Long Back cap TIG 17-26-18	321.102.101	10
2	"O" Ring	101.102.111	10
3	Std. Torch Body	316.103.502	1
4	Flex Torch Body	316.107.502	1
5	Handle with screw	437.101.102	1
6	Single button switch	439.000.101	1
7	Two buttons switch	439.000.102	1
8	Four buttons switch	439.000.103	1
9	Switch with potentiometer 4,7 Kohm	439.001.004	1
9	Switch with potentiometer 10 Kohm	439.001.010	1
10	Torch body with Valve	316.105.102	1
11	Valve with "O" ring	330.101.102	1
12	"O" ring	101.102.112	1
13	Flex torch body with Valve	316.108.502	1
14	Round handle	337.102.102	1
15	Straight torch body	416.106.102	1
16	Knuckle joint	456.102.102	1
17	Power Cable 4m.	325.010.403	1
17	Power Cable 8m.	325.010.803	1
18	Hose clamp Ø 9,5	101.106.202	10
19	Gas hose "black"	166.081.051	-
20	Control cable with connector 4m.	443.001.401	1
20	Control cable with connector 8m.	443.001.801	1
21	Protective Cover "Tubix"	175.002.285	-
22	Power Cable for Valve 4m.	324.030.401	1
22	Power Cable for Valve 8m.	324.030.801	1
23	Handle screw	181.104.103	20

DT.18 - DELFOTIG - LIQUID

LIQUID COOLED TORCHES

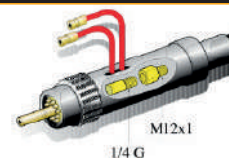
TECHNICAL DATA

Technical data:	(EN60974-7)
Rating:	320A. DC 230 A. AC
Duty Cycle:	100%
Tungsten Electrodes:	0,5-4,0 mm



COMPLETE TORCH P/N

MOD.	EU	D. 50/70	MK
DT.18.4	430.011.040	430.011.041	430.011.043
DT.18.8	430.011.080	430.011.081	430.011.083
DT.18F.4 (Flex)	430.111.040	430.111.041	430.111.043
DT.18F.8 (Flex)	430.111.080	430.111.081	430.111.083
DT.18P.4 (diritta)	430.401.040	430.401.041	430.401.043
DT.18P.8 (diritta)	430.401.080	430.401.081	430.401.083



REPLACEMENT PARTS

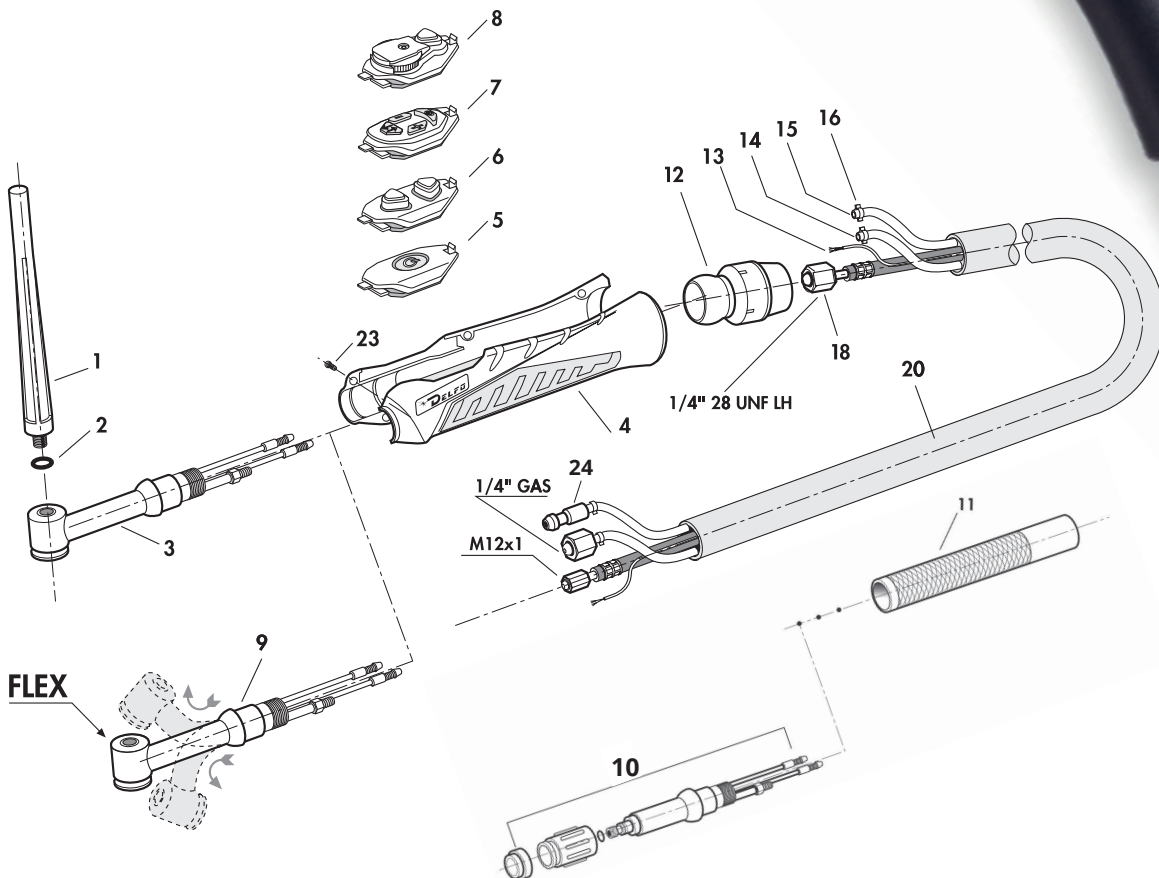
POS.	DESCRIPTION	P/N	BAG
1	Long Back cap TIG 17-26-18	321.102.101	10
2	"O" Ring	101.102.111	10
3	Std. Torch Body	316.102.501	1
4	Handle with screw	437.101.102	1
5	Single button switch	439.000.101	1
6	Two buttons switch	439.000.102	1
7	Four buttons switch	439.000.103	1
8	Switch with potentiometer 4,7 Kohm	439.001.004	1
8	Switch with potentiometer 10 Kohm	439.001.010	1
9	Flex torch body	316.107.504	1
10	Round handle	337.102.102	1
11	Straight torch body	416.106.101	1
12	Knuckle joint	456.102.102	1
13	Control cable with connector 4m.	443.001.401	1
13	Control cable with connector 8m.	443.001.801	1
14	Gas hose "black"	166.081.051	-
15	Water hose "black"	202.070.040	-
16	Hose clamp Ø 9,5	101.106.202	10
18	Power Cable 4m.	312.010.403	1
18	Power Cable 8m.	312.010.803	1
20	Protective Cover "Tubix"	175.002.285	-
23	Handle screw	181.104.103	20
24	Quick Connector	150.108.115	10

DT.20 - DELFOTIG - LIQUID

LIQUID COOLED TORCHES

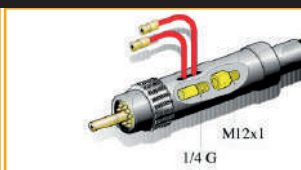
TECHNICAL DATA

Technical data:	(EN60974-7)
Rating:	250A. DC 180 A. AC
Duty Cycle:	100%
Tungsten Electrodes:	0,5-3,2 mm



COMPLETE TORCH P/N

MOD.	EU	D. 50/70	MK
DT.20.4	440.011.040	440.011.041	440.011.043
DT.20.8	440.011.080	440.011.081	440.011.083
DT.20F.4 (Flex)	440.111.040	440.111.041	440.111.043
DT.20F.8 (Flex)	440.111.080	440.111.081	440.111.083
DT.20P.4 (diritta)	440.401.040	440.401.041	440.401.043
DT.20P.8 (diritta)	440.401.080	440.401.081	440.401.083



REPLACEMENT PARTS

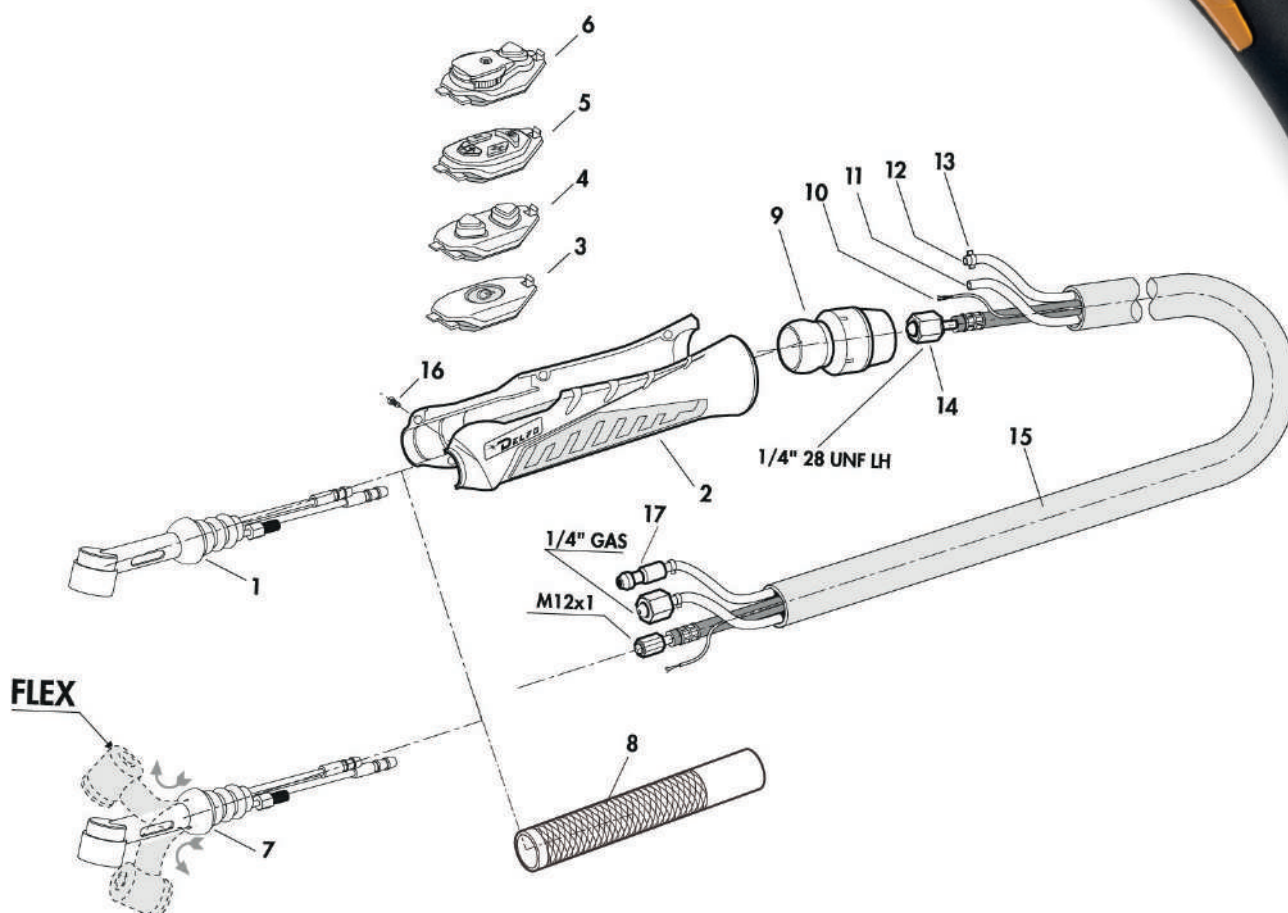
POS.	DESCRIPTION	P/N	BAG
1	Long Back cap TIG 9-20	321.102.102	10
2	"O" Ring	101.102.112	10
3	Stnd. Torch Body	416.102.102	1
4	Handle with screw	437.101.101	1
5	Single button switch	439.000.101	1
6	Two buttons switch	439.000.102	1
7	Four buttons switch	439.000.103	1
8	Switch with potentiometer 4,7 Kohm	439.001.004	1
8	Switch with potentiometer 10 Kohm	439.001.010	1
9	Flex torch body	416.107.505	1
10	Straight torch body	416.106.104	1
11	Round handle	337.102.104	1
12	Knuckle joint	456.102.101	1
13	Control cable with connector 4m.	443.001.401	1
13	Control cable with connector 8m.	443.001.801	1
14	Gas hose "black"	166.060.040	-
15	Water hose "black"	202.070.040	-
16	Hose clamp Ø 9,0	101.106.203	10
18	Power Cable 4m.	312.020.401	1
18	Power Cable 8m.	312.020.801	1
20	Protective Cover "Tubix"	175.002.220	-
23	Handle screw	181.104.103	20
24	Quick Connector	150.108.115	10

DT.24W - DELFOTIG - LIQUID

LIQUID COOLED TORCHES

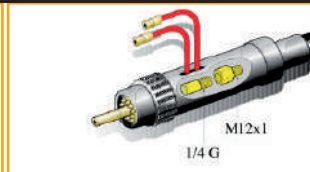
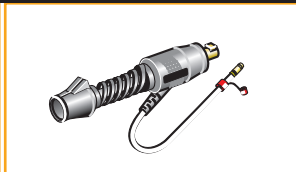
TECHNICAL DATA

Technical data:	(EN60974-7)
Rating:	180A. DC 125 A. AC
Duty Cycle:	100%
Tungsten Electrodes:	1,0-2,4 mm



COMPLETE TORCH P/N

MOD.	EU	D. 50/70	MK
DT.24W.4	460.011.040	460.011.041	460.011.043
DT.24W.8	460.011.080	460.011.081	460.011.083
DT.24WF.4(flex)	460.111.040	460.111.041	460.111.043
DT.24WF.8(flex)	460.111.080	460.111.081	460.111.083



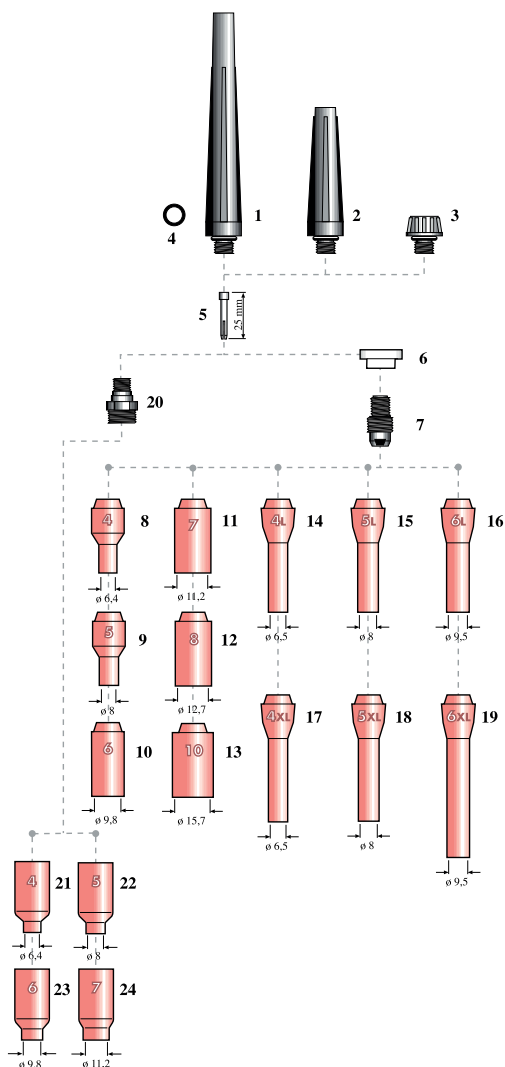
REPLACEMENT PARTS

POS.	DESCRIPTION	P/N	BAG
1	Std. Torch Body	416.102.103	1
2	Handle with screw	437.101.101	1
3	Single button switch	439.000.001	1
4	Two buttons switch	439.000.002	1
5	Four buttons switch	439.000.003	1
6	Switch with potentiometer 4,7 Kolm	439.001.004	1
6	Switch with potentiometer 10 Kolm	439.001.010	1
7	Flex torch body	416.107.506	1
8	Round handle	337.102.104	1
9	Knucle joint	452.102.101	1
10	Control cable with connector 4m	443.001.401	1
10	Control cable with connector 8m	443.001.801	1
11	Gas hose "black"	166.060.040	-
12	Water hose "black"	202.070.040	-
13	Hose clamp Ø 9,0	101.106.203	10
14	Power cable 4m	312.020.401	1
14	Power cable 8m	312.020.801	1
15	Protection Cover "Tubix"	175.002.220	-
16	Handle screw	181.104.103	20
17	Quick connector	150.108.115	10

REPLACEMENT & ACCESSORIES TIG



WEAR PARTS DELFO TIG 9-20

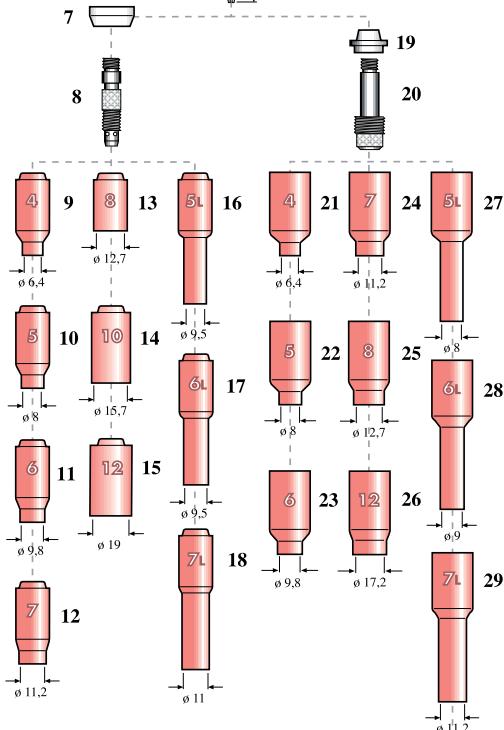
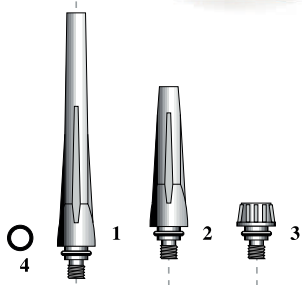


POS.	DESCRIPTION	P / N	BAG
1	Long Back cap 41V24	321.102.102	10
2	Medium Back cap 41V35	321.102.104	10
3	Short Back cap 41V33	321.101.102	10
4	"o" ring OR 2018	101.102.112	10
5	Collet Ø 1,0 13N21	313.102.010	10
5	Collet Ø 1,6 13N22	313.102.016	10
5	Collet Ø 2,0	313.102.020	10
5	Collet Ø 2,4 13N23	313.102.204	10
5	Collet Ø 3,2 13N24	313.102.032	10
6	Teflon gasket 598882	335.101.102	10
7	Collet Body Ø 1,0 13N26	314.103.010	10
7	Collet Body Ø 1,6 13N27	314.103.016	10
7	Collet Body Ø 2,0	314.103.020	10
7	Collet Body Ø 2,4 13N28	314.103.024	10
7	Collet Body Ø 3,2 13N29	314.103.032	10
8	Alumina Cup Gr.4 13N08	379.102.104	10
9	Alumina Cup Gr.5 13N09	379.102.105	10
10	Alumina Cup Gr.6 13N10	379.102.106	10
11	Alumina Cup Gr.7 13N11	379.102.107	10
12	Alumina Cup Gr.8 13N12	379.102.108	10
13	Alumina Cup Gr.10 13N13	379.102.110	10
14	Alumina Cup Gr.4L 796F71	379.102.204	10
15	Alumina Cup Gr.5L 796F72	379.102.205	10
16	Alumina Cup Gr.6L 796F73	379.102.206	10
17	Alumina Cup Gr.4 XL 796F75	379.102.304	10
18	Alumina Cup Gr.5 XL 796F76	379.102.305	10
19	Alumina Cup Gr.6 XL 796F77	379.102.306	10
20	Collet Body Gas Lens Ø 1,0 45V42	314.104.010	10
20	Collet Body Gas Lens Ø 1,6 45V43	314.104.016	10
20	Collet Body Gas Lens Ø 2,4 45V44	314.104.024	10
20	Collet Body Gas Lens Ø 3,2 45V45	314.104.032	10
21	Alumina Cup Gr.4 53N58 Gas Lens	379.104.104	10
22	Alumina Cup Gr.5 53N59 Gas Lens	379.104.105	10
23	Alumina Cup Gr.6 53N60 Gas Lens	379.104.106	10
24	Alumina Cup Gr.7 53N61 Gas Lens	379.104.107	10

REPLACEMENT & ACCESSORIES TIG



WEAR PARTS DELFO TIG 17-18-26

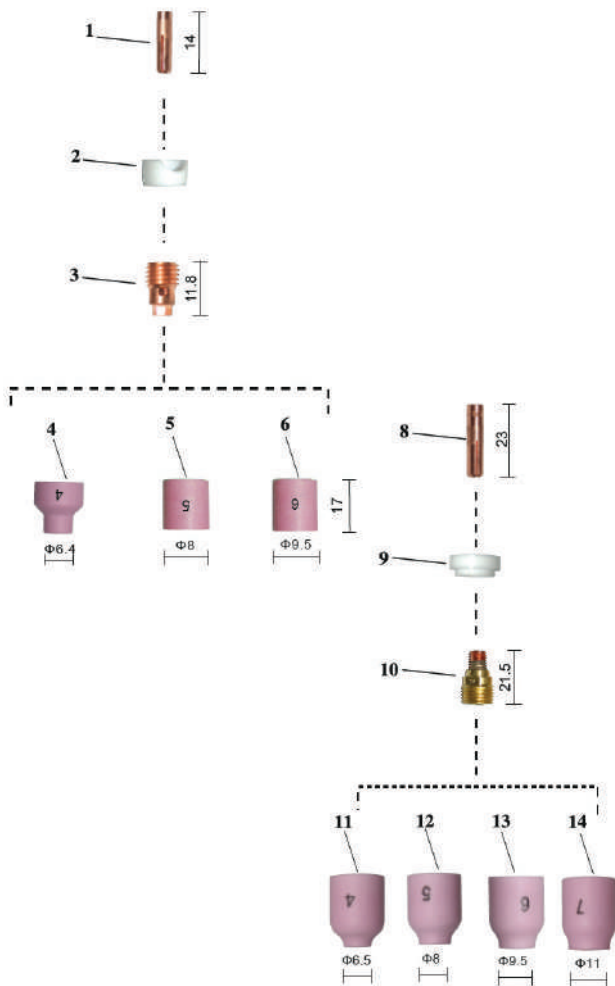


POS.	DESCRIPTION	P / N	BAG
1	Long Back cap 57Y02	321.102.101	10
2	Medium Back cap 57Y03	321.102.103	10
3	Short Back cap 57Y04	321.101.101	10
4	"o" ring OR 2037	101.102.111	10
6	Collet Ø 1,0 10N22	313.101.010	10
6	Collet Ø 1,6 10N23	313.101.016	10
6	Collet Ø 2,0	313.101.020	10
6	Collet Ø 2,4 10N24	313.101.024	10
6	Collet Ø 3,2 10N25	313.101.032	10
6	Collet Ø 4,0 54N20	313.101.040	10
7	Teflon gasket 18CG	335.101.101	10
8	Collet Body Ø 1,0 10N30	314.101.010	10
8	Collet Body Ø 1,6 10N31	314.101.016	10
8	Collet Body Ø 2,0	314.101.020	10
8	Collet Body Ø 2,4 10N32	314.101.024	10
8	Collet Body Ø 3,2 10N28	314.101.032	10
8	Collet Body Ø 4,0 406488	314.101.040	10
9	Alumina Cup Gr.4 10N50	379.101.104	10
10	Alumina Cup Gr.5 10N49	379.101.105	10
11	Alumina Cup Gr.6 10N48	379.101.106	10
12	Alumina Cup Gr.7 10N47	379.101.107	10
13	Alumina Cup Gr.8 10N46	379.101.108	10
14	Alumina Cup Gr.10 10N45	379.101.110	10
15	Alumina Cup Gr.12 10N44	379.101.112	10
16	Alumina Cup Gr.5L 10N49L	379.101.205	10
17	Alumina Cup Gr.6L 10N48L	379.101.206	10
18	Alumina Cup Gr.7L 10N47L	379.101.207	10
19	Teflon Gasket	335.102.101	10
20	Collet Body Gas Lens Ø 1,0 45V24	314.102.010	10
20	Collet Body Gas Lens Ø 1,6 45V25	314.102.016	10
20	Collet Body Gas Lens Ø 2,4 45V26	314.102.024	10
20	Collet Body Gas Lens Ø 3,2 45V27	314.102.032	10
20	Collet Body Gas Lens Ø 4,0 45V28	314.102.040	10
21	Alumina Cup Gr.4 54N18 Gas Lens	379.103.104	10
22	Alumina Cup Gr.5 54N17 Gas Lens	379.103.105	10
23	Alumina Cup Gr.6 54N16 Gas Lens	379.103.106	10
24	Alumina Cup Gr.7 54N15 Gas Lens	379.103.107	10
25	Alumina Cup Gr.8 54N14 Gas Lens	379.103.108	10
26	Alumina Cup Gr.12 54N19 Gas Lens	379.103.112	10
27	Alumina Cup Gr.5 L 54N17L Gas Lens	379.103.205	10
28	Alumina Cup Gr.6 L 54N16L Gas Lens	379.103.206	10
29	Alumina Cup Gr.7 L 54N15L Gas Lens	379.103.207	10

REPLACEMENT & ACCESSORIES TIG



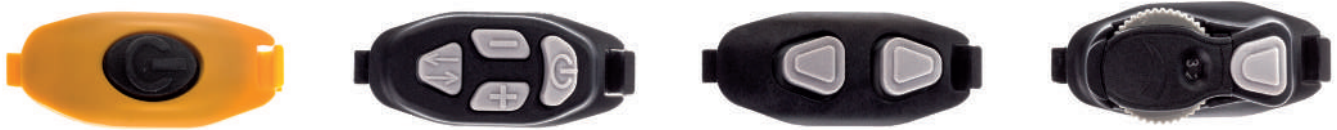
WEAR PARTS DELFO TIG 24W



POS.	DESCRIPTION	P / N	BAG
1	Standard Collect Ø 1,0 53N16	313.103.010	10
1	Standard Collect Ø 1,6 53N14	313.103.016	10
1	Standard Collect Ø 2,4 24C332	313.103.024	10
2	Standard Cup Insulator lato ugello 53N22	335.101.103	10
3	Standard Collet Body Ø 1,0 53N18	314.105.010	10
3	Standard Collet Body Ø 1,6 53N19	314.105.016	10
3	Standard Collet Body Ø 2,4 24CB332	314.105.024	10
4	Alumina Cup Gr.4 53N24	379.102.404	10
5	Alumina Cup Gr.5 53N25	379.102.405	10
6	Alumina Cup Gr.6 53N27	379.102.406	10
8	Gas Lens Collet Ø 1,0 53N63	313.104.010	10
8	Gas Lens Collet Ø 1,6 53N64	313.104.016	10
8	Gas Lens Collet Ø 2,4 24GLC332	313.104.024	10
9	Standard Gas Lens Cup Insulator 53N66	335.102.103	10
10	Collet Body Gas Lens Ø 1,0 45V42	314.104.010	10
10	Collet Body Gas Lens Ø 1,6 45V43	314.104.016	10
10	Collet Body Gas Lens Ø 2,4 45V44	314.104.024	10
11	Alumina Body Gas Lens Gr.4 53N58 Gas Lens	379.104.104	10
12	Alumina Body Gas Lens Gr.5 53N59 Gas Lens	379.104.105	10
13	Alumina Body Gas Lens Gr.6 53N60 Gas Lens	379.104.106	10
14	Alumina Body Gas Lens Gr.7 53N61 Gas Lens	379.104.107	10

REPLACEMENT & ACCESSORIES TIG

MODULAR SWITCHING AND REMOTE CONTROL



TUBIX OR LEATHER PROTECTIVE COVER



Cables, Hoses & Cover for Tig Torches

DESCRIPTION	COLOR	Ø I.D/O.D.	P / N	COIL / BAG
Control Wire	black / brown	-	143.101.102	200 m.
Gas Hose TIG 20	black	4,0 / 6,0	166.060.040	250 m.
Gas Hose TIG 26-18	black	5,0 / 8,0	166.081.051	300 m.
Water Hose	black	4,0 / 7,0	202.070.040	100 m.
Protective Cover "Tubix" 9-17	-	-	175.002.220	81 m.
Protective Cover "Tubix" 18-26-20	-	-	175.002.285	81 m.
Rubber Protective Cover 9-17	-	-	173.230.210	
Rubber Protective Cover 18-26-20	-	-	173.280.260	
Leather Protective Cover	black	-	464.024.026	0,8 m.
Knuckle joint for leather cover	-	-	456.103.102	1

REPLACEMENT & ACCESSORIES TIG

CONNECTOR

» New design of the back box cable support, machine side.



Tig torch connectors

CONNETTORT TIG	MODELLO TORCIA SERIE	CODICE	CONF.
 <p>50mmq 1/4" GAS</p>	DT.9-9V	442.100.104	1
	DT.17-17V		
	DT.26V		
	DT.26	442.100.105	1
	DT.20	442.100.110	1
	DT.18	442.100.111	
 <p>M12x1 1/4 G</p>	DT.9-17	342.105.107	1
 <p>1/4 G</p>	DT.26	342.105.109	1
 <p>ACQUA M12x1 1/4 G</p>	DT.18-20	342.105.108	1

REPLACEMENT & ACCESSORIES

TUNGSTEN ELECTRODES

ELECTRODES DIFFERENCES

TUNGSTENO PURO WP

WP pure tungsten electrodes (minimum tungsten content is 99.5%, with no other impurities) were the first to be used in TIG welding. The pure tungsten electrode is the best choice for AC welding, even if they can be used in DC. It keeps the surface of the base material particularly clean, has a good conductivity and by heating it tends to assume a regular circular shape, a characteristic that does not make continuous sharpening necessary during use. The welding arc is stable even with very low current, so that aluminum, magnesium and other metals can be welded even with currents below 5 amperes.

CERIATED TUNGSTEN WC20

Ceriated tungsten electrode contains 1.8%-2.2% ceria, electron work is 2.4eV. This electrode plays a good performance on starting arc and stabilizing arc with low current. Therefore, ceriated tungsten electrode are commonly using in pipeline, stainless steel and small precision parts welding. And it's the first choice when the condition is in the low and direct current or the diameter demands blew 2.0mm. The mobility of cerium oxide is quite high, so, ceriated tungsten is not suitable for the application in the high current. If it's used in the high current, the oxide may accelerate to the high hot area, which is the top of the tungsten electrode, and the uniformity of oxide may suffer damage, the benefit brought by cerium oxide will disappear.

TUNGSTEN WL 10 LANTHANATED 1%

TUNGSTEN WL 15 LANTHANATED 1,5%

TUNGSTEN WL 20 LANTHANATED 2%

Lanthanated tungsten electrodes contains 0,8 -2,2% lanthanum, the electrone work function is 2,8 eV 3,0 eV. Electrodes very easy to start, with very good stability at low current, it is mainly used in DC, with good performance well in AC welding. Lanthanum, whit good creep resistance, strong ductility, lower stirring rate, keeps the tip temperature of electrodes lower, which helps to prevent grain from becoming larger, and the service life of electrode can be increased substantially. The lifetime of lanthanated tungsten electrodes is longer than thoriated tungsten. It is particularly good at preventing thermal shock. Also in the short cycle welding when you ignite repeatedly, it can be welded very well and prevent pollution. When welding pipeline, welders are satisfied with this lanthanated tungsten electrodes, because the downtime will be reduce.

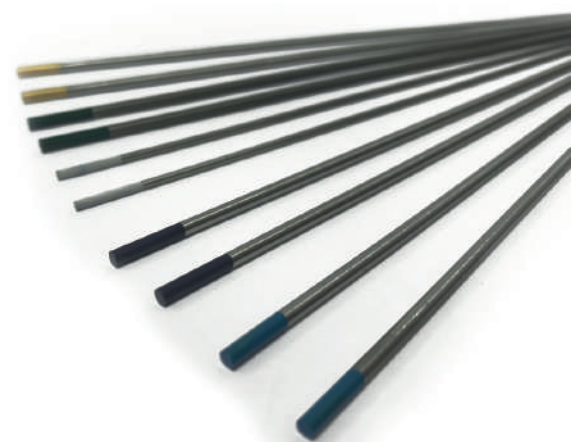
TUNGSTEN WS2 RARE HEARTH

TUNGSTEN WS3 RARE HEARTH

Tungsten Electrodes with rare earth (mixed oxides). In comparison to thoriated electrodes this electrode is less harmful to the environment and not radioactive. The electrodes offer excellent ignition characteristics and consistent welding properties. They are universal and suitable for all applications in the whole range of DC and AC welding, for non-alloyed and high-alloyed steel, aluminum, titanium, nickel, copper and magnesium alloys. With their great ignition property, they are suitable for automated welding. Due to the low electrode temperature, they offer an increased current carrying capacity and long service life than thoriated electrodes.

THE ADVANTAGES AT A GLANCE:

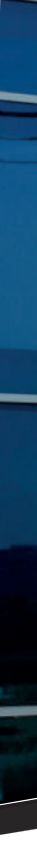
- » The welder is no longer exposed to radiation.
- » Reduced environment impact. Remaining pieces and grinding dust are no longer treated as hazardous.
- » No special safeguards required for storage and transport.
- » Electrode tip remains "cooler" than thoriated types
- » Superior repeatable ignition
- » Increased arc stability
- » Reduced burn off
- » Higher current carrying capacity
- » Lower degradation to the electrode tip
- » Increased application flexibility



ELECTRODE LENGHT 175 MM Ø	PURE TUNGSTEN WP	TUNGSTEN CERIATED WC20 2%	TUNGSTEN WL 10 LANTHANATED 1%	TUNGSTEN WL 15 LANTHANATED 1,5%	TUNGSTEN WL 20 LANTHANATED 2%	TUNGSTENO WS2 RARE HEARTH	TUNGSTENO WS3 RARE HEARTH
1,0	300.017.510	300.217.510	300.317.510	300.417.510	300.517.510	300.617.510	300.717.510
1,6	300.017.516	300.217.516	300.317.516	300.417.516	300.517.516	300.617.516	300.717.516
2,4	300.017.524	300.217.524	300.317.524	300.417.524	300.517.524	300.617.524	300.717.524
3,2	300.017.532	300.217.532	300.317.532	300.417.532	300.517.532	300.617.532	300.717.532
4,0	300.017.540	300.217.540	300.317.540	300.417.540	300.517.540	300.617.540	300.717.540

NOTE

A large rectangular area with a thin orange border, containing numerous horizontal lines for writing.





DELFO S.r.l.

Via Benaco,1/3 - 20098
San Giuliano Milanese - Milano - Italy
Tel.: +39 02 87205264

e-mail: info@delfoweld.com
www.delfoweld.com

PREMIUM QUALITY

MADE IN ITALY